



OPUNAKE & COASTAL NEWS

Vol. 31 No 10, June 2, 2022
www.opunakecoastalnews.co.nz

Published every
Thursday Fortnight

Phone and Fax 761-7016
A/H 761-8206
for Advertising and Editorial
ISSN 2324-2337, ISSN 2324-2345

Inside

Deputy PM visits New Plymouth



Free Julian Assange.
See page 2.



This cart has seen a lot
of history. See page 7.



Reflecting on Freddie
Mercury and Queen.
See page 10.



Otakeho Hall marks 125
years. See page 15.



Drive-in movie fun at
Opunake and Eltham.
See page 28.

The Deputy Prime Minister Grant Robertson in a Post-Budget Presentation roadshow in New Plymouth said New Zealand's economy was recovering from Covid. He described the 2022 Budget announced on May 26 as the hardest budget he had put together. With the Ukraine conflict coming on the back of Covid "we are in a challenging time" he said.

The Deputy Prime Minister was addressing around 70 people from the Taranaki Chamber of Commerce at a luncheon at the Plymouth Hotel in New Plymouth on Friday May 27. Also in attendance was New Plymouth MP Glen Bennett.

It was the Minister of Finance's fifth budget one of which he said he had to "rewrite in three days when Covid arrived," and added that the Government was impatient to enact their policies which had been thwarted by the Covid pandemic. Covid had "got in the way," said Mr Robertson. But they were proud of how they had dealt with the pandemic.

"The way we managed Covid was the epitome of the wellbeing response" he said adding "New Zealand has one of the lowest mortality rates in the world." He also said that New Zealand continued to show a strong economic recovery from Covid. Unemployment at 3.2% was "at a record low" which he attributed to the fact that "we've supported training people."

The world however was still suffering the effects of the pandemic with ports in the world such as Shanghai operating at half their capacity, he cited as an example.

In his wide ranging



New Plymouth MP Glen Bennett and Deputy PM Grant Robertson share a joke.

address which also covered the economic and fiscal outlook for New Zealand, the finance minister said the Russian Ukrainian conflict had contributed to global inflation, adding "Russia and the Ukraine were a massive part of the world's wheat production." It had also impacted oil prices and international commodity prices. New Zealand's inflation rate which at 6.9% had reached a 30 year high had meant "many were doing it tough."

Measures to help people with rising living costs and ease the pressure on families was at the heart of this year's budget he said, as well as investing in the future.

The 2022 Budget includes a short term cost of living payment of \$350 for those earning less than \$70,000 and not already receiving the Winter Energy payment. The 25 cents per litre reduction on fuel was also extended for a further two months. They had also reduced road user charges

for a further two months. Half price public transport for people with Community Service Cards would now be permanent and an extension of the current half price fares for everyone till August 31. There was also financial support for those having trouble accessing driving lessons or tests because of cost. Other initiatives in the budget included extra support for first home buyers by lifting price caps on First Home Grants and Loans. In accordance with reducing reliance on fossil fuels and reducing greenhouse gas emissions they were making it cheaper for low and middle income families to buy an electric vehicle and backing farmers with new technology to cut agricultural emissions. They're also making it easier for small and medium-sized businesses to access finance so they can expand. To get people into

jobs they were focussing on training and extending the Apprenticeship Boost to support another 38,000 apprenticeships. Improving access to dental treatment for those on low incomes from \$300 to \$1000 a year was another initiative.

In Taranaki the Provincial Growth Fund of \$88 million had been approved for 56 projects. These included a \$13.3m grant for track upgrades in Egmont National Park and \$19.9m for new wind generation in South Taranaki.

Other projects approved included \$20 million for Yarrow Stadium redevelopment and \$13.4 million for Forgotten World Highway improvements and a \$27million Ake Ake New Zealand National Energy Development Centre.

He also said "We're doing the right thing about climate change" and mentioned

using New Zealand's natural resources to generate power such as geothermal power and wind farms.

They were also keen to get more freight on rail and to increase rail travel options for passengers.

Though they had "copped a bit of flak" from those in the agricultural sector and the Emissions Trading Scheme they felt they were on the right path.

Other issues he addressed including the importance of investing in infrastructure. New Zealand's population had risen from 3 to 4 million over 30 years and from 4-5 million over 16 years.

"We didn't invest in transport, housing..." he said. They were in catch up mode.

Returning to Covid he acknowledged "yes, we did spend a lot of money" but "It kept people in work" and it allowed businesses to grow".

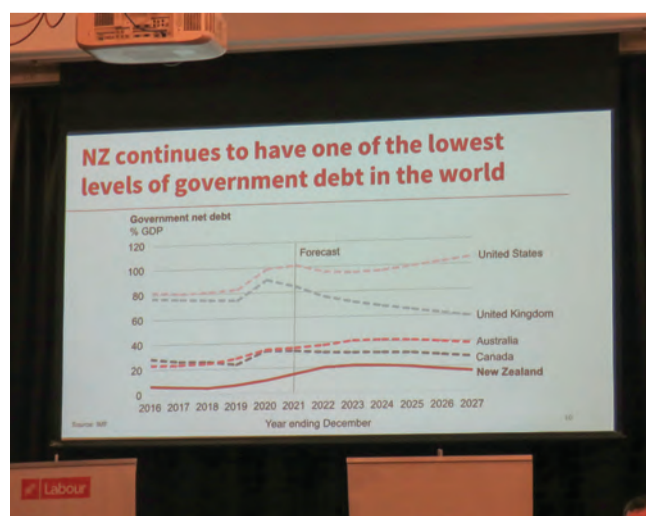
In terms of getting us into surplus again, we could do it faster but it would be at the cost of cutting services etc he said.

"You have to make that balance work."

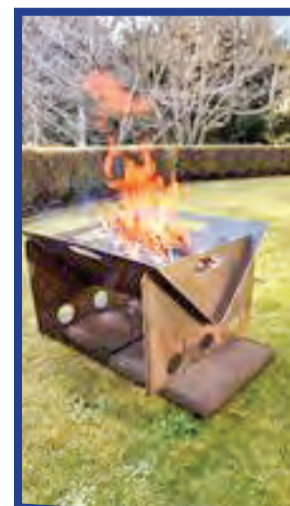
Overall the outlook was positive. "New Zealand continues to have one of the lowest levels of government debt in the world," he said showing charts which indicated New Zealand was below Australia, Canada, the UK and the USA.

As to what came next?

The Ukrainian conflict had highlighted our dependence on oil and the need for new sources of energy with hydrogen a possible long term option, said the Minister of Finance.



New Zealand continues to have one of the lowest levels of government debt in the world.



WANT TO MAKE THE MORE OF THE OUTDOORS?

Garden Art

personalised for your space or the perfect gift.

Call or email Mel.



Coastal Welders
027 255 8677
06 752 8138

Local news, local people, local businesses, local sport, local arts and events. Delivered free around the mountain every fortnight.



editorial@opunakecoastalnews.co.nz
ads@opunakecoastalnews.co.nz
accounts@opunakecoastalnews.co.nz

Phone: 06 761 7016
23 Napier St, Opunake

OPUNAKE & COASTAL NEWS



Letters to the Editor

Send your your views to:
Letters to the Editor
23 Napier Street, Opunake.
Fax: (06) 761 7016

email: editorial@opunakecoastalnews.co.nz
You are welcome to use a pseudonym but must supply your name and address to us.

“Let’s create your business growth strategy together”
Your only local community accounting firm



HUGHSON & ASSOCIATES
Accounting for the future, today

Hawera - Opunake - Patea - 06 278 4169
Opunake Office hours:
Mon & Thurs: 9am-3pm, Wed: 10am-3pm

RENTAL VEHICLES



- CHARTER BUSES
- VANS
- TOUR BUSES

ALUMINIUM SCAFFOLDING FOR HIRE
\$35 per day, \$50 weekend.
More than 6 days \$30 per day.

WATERBLASTER FOR HIRE
Petrol 3000 psi 15L/minC
Cost: Half day \$90, Full day \$120, Weekend \$130. Friday after 3pm return Monday 9am.
Bond for waterblaster and scaffolding \$50.
For more information contact Tracey or Christine at

PICKERING MOTORS
11 TENNYSON ST OPUNAKE PH (06) 761-8363
0800 22 11 20 Email: pickering.motors@xtra.co.nz

OPUNAKE & COASTAL NEWS

Registered office: 23 Napier Street, PO Box 74, Opunake
Phone: Office (06) 761-7016, A/h (06) 761-8206

For advertising, email: ads@opunakecoastalnews.co.nz
For editorial, email: editorial@opunakecoastalnews.co.nz
For accounts, email: accounts@opunakecoastalnews.co.nz

www.opunakecoastalnews.co.nz
Editor: Bernice McKellar
Journalists/Sales: Rolland McKellar, Bryan Kirk
Advertising/Production: Vanessa Smith
Production/IT: Shane Butler
Delivery: Thursday, fortnightly
Registered as a newspaper.

Member of the Community Newspapers Association of New Zealand



The Opunake and Coastal News is distributed free to every home and business within the rural area bounded in the north by the New Plymouth city border, extending east to Egmont Village, and around to the edge of Stratford, south to the Hawera city border and inland to Kaponga and through Eltham.

While we welcome free speech, the views expressed in the Letters to the Editor do not necessarily reflect those of the Opunake & Coastal News. Please limit letters to 350 words as we sometimes struggle for space to fit them all in.

New regional train tours

According to New Zealand’s Kiwi Rail Scenic Journeys general manager Tracey Goodall in September Kiwi’s National Explorer and Coastal Pacific Scenic Rails have put together an exciting new travel package to encourage not only Kiwi travellers but also our international overseas tourists to explore our regional New Zealand in both the North and South Islands.

Now this to me sounds all good, but my question is , why hasn’t this scenic trail tourist package included our province? And what’s wrong with Venture Taranaki, our Regional Council, Taranaki Chamber of Commerce and our district councils getting together to see if this Scenic

Rail Journey can come to our province, as I am getting sick and tired of seeing our great province of Taranaki missing out on opportunities like this. I do know that during next year we have three cruise ships visiting our province. They will start in January, so I’d like to urge our coastal towns to open their tourist spots and contact our regional council.

We all know that this virus has struck all of us worldwide and many have died of it, also it has affected our tourist industry again worldwide, so we are not alone, so I wouldn’t go blaming our government as they have done an excellent job of trying to halt this virus as much as they can, but I do really believe this government will do it.

Tom Stephens
New Plymouth

ADELPHOS

Have you noticed how the English language has changed since the current pandemic? Come to think of it, not just the English language, but all languages. O.K. We have had the first identified coronavirus since 1965 but how many of us had heard of it? I, for one, had no idea that the common cold was part of the coronavirus family. More recently has come the new plural meaning for one of our common rodents: RATS. Another word that has gained a level of high usage, although definitely not new, has been masks.

Masks are ancient. They have been used since the

Masks

dawn of civilisation and have numerous forms and functions. Stone masks found near Jerusalem, Israel, are thought to date back 9,000 years and represent the spirits of dead ancestors. Along with spiritual significance, masks have also been associated with social and religious ceremonies, fertility rites, curing the sick and funeral practices. They have been used in warfare and on festive occasions or dramatic reenactments. But more recently, along with Marvel movies, we have come to associate masks with protection from the Covid-19 virus.

In the gospels of Matthew,

Marae and Rahui

Please let me explain to some people that think they know what they are not very good at.

A marae is a meeting house where iwi can meet and hold functions like birthdays and tangis which there have been at least five that have had to be held in private homes. Why? Because their marae is not there for them and they have no choice. You could have a community garden at the marae to help people out. There is still nothing happening and this has to be the worst case in Taranaki. It is time for you incompetent kaitiaki to resign forthwith and let some others restore our marae.

Can you publish the results of the survey you have done to say there is a shortage of kaimoana. After speaking to several regular honest gatherers they assure me that there isn’t and the problem is poachers.

You people are shutting

the gate after the horse has gone. The ethnic people(your words) are going to come back.

The only way to stop this is by policing. All you coastal land owners that are so concerned go through the proper channels and become temporary fisheries officers. The same thing applies to you people at the top pushing the rahui. Get your facts right first. By the way, to some of you that don’t know, paua live under the rocks and the kina is best when the pohutukawa is in flower.

Disgraceful
Opunake

Rugby must promote itself

Once again our 2022 Taranaki club rugby competition season has begun in earnest, plus having 12 rugby clubs competing in our Premiers,

letters continued on page 3

Mark, Luke and John in the Bible, there are twenty references to mask wearing and in all of them we are urged not to be mask wearers. They are not talking about the facial masks we wear for protection, but rather the invisible ones that come with hypocrisy. The root of hypocrisy involves the concept of putting on an act or not being real. We all wear masks and we need to in order to survive in society.

Masks can reveal as much as they hide. For example, our social life may present a persona of being friendly and trusting and our work life may present a persona of being efficient, thorough or fast. But inside we may feel bored, wanting our own space and tired. But we may also wear masks to hide part

of ourselves, from ourself. At the same time masks can help us to become the person we want to be. The brain has an amazing capacity to make new neural pathways. When we learn something new and do it over and over and over again, we become good at it because the brain realises that this action is important and lays down new neural pathways (neuroplasticity).

When we trust God, have connection with Him and learn to love Him, we learn that masks are not needed with Him. His love for us is non-judgemental and He accepts us as we are. Masks can separate us spiritually from God: believe me when I say that we do not need masks with God.

Adelphos

FOR THE SUPERMARKET IT’S FOOD
FOR THE GARAGE IT’S PETROL
FOR THE HARDWARE STORE IT’S TOOLS

PUBLICITY IS OUR BUSINESS
THIS IS WHAT WE SELL!

No one would expect any of the above businesses to give their services free. We hope you understand that we shouldn’t be expected to do likewise.



OPUNAKE & COASTAL NEWS

More Opunake & Coastal News’ out

We have printed more copies of the Opunake & Coastal News.

It is available on stands at the following locations

New Plymouth:
Ate Forty One, Tukapa St, Westown
Challenge Spotswood
The Health Shop on the ground floor at Centre City
The Store, Cnr Tukapa St & Wallath Rd

Waitara:
Outside the North Taranaki Community House Trust, 67 McLean St

Inglewood:
Inglewood Book Centre, 31 Rata St

Stratford:
Stratford Knit & Sew, 202 Broadway
First National, Stratford.

Eltham:
Eltham Four Square

Hawera:
Outside First National, Cnr of Victoria and High Streets
Outside Nursery Rhyme, 158 High St
Papers are also available at
The Sunshine Dairy, Hawera
The Normanby Dairy
Swetes Dairy, Manaia
Pastimes in Opunake
Tim’s Barbershop, Moturoa
Okato Takeaways

EDITORIAL

Julian Assange should be freed

Australia's new prime minister Anthony Albanese belongs to the *Bring Julian Assange Home Parliamentary Group*, which has at least 30 MPs as members.

I have often wondered why previous Australian leaders have seemingly shown minimal interest in dealing with this situation whereby an Australian citizen is kept in prison for the crime of being a whistle-blower over human rights violations. Former New Zealand PM Helen Clark is another person appalled by the continued mistreatment of Assange.

Green Party's Golriz Ghahraman has stated that Assange's continued incarceration is a threat to



Political prisoner Julian Assange.

press freedom globally.

What exactly did Assange do that was so wrong? The founder of Wikileaks (in 2006) has released information on many cases, such as the Collateral Murder

video, which pictured the systematic murder of 18 Iraqi civilians by gunfire from a US military helicopter. The video was released in 2010.

Leaving aside the dire implications of Bush and

Blair's illegal invasion of Iraq in 2003 (over non-existent weapons of mass destruction), which has reportedly led to the combined death toll of over a million people (civilians and service people), what is so wrong in revealing hidden details concerning mass murders and atrocities? Were those military gunmen, in the safety of their helicopter, ever called to account for their actions or were they protected by military misinformation and dishonesty?

Currently, Assange, who is now reportedly in a reduced psychological state, is held in Belmarsh maximum-security prison where he has been since April 2009.

Britain is preparing to extradite him to the United States to answer charges. He has been denied leave to appeal the decision.

This decision is ironic, because a number of years ago (2000), British Foreign Secretary Jack Straw refused to extradite General Pinochet, the Chilean president (result of a bloody military coup) from 1973-1981 to face criminal charges (300 of them) in Spain including murder, torture (including sexual torture), systematic rape, as well as tax evasion, embezzlement including the theft of some \$28 million dollars of public money. Straw refused extradition because it would be "unjust and oppressive"

so this truly evil person died in freedom in 2006, aged 91. Yet Assange will be indicted to the United States for simply telling the truth.

A group of lawyers, politicians and journalists belonging to *Aotearoa 4 Assange*, have requested that our prime minister Jacinda Ardern support the new Australian leader Mr Albanese in his efforts to secure the freedom of the political prisoner Julian Assange, thus protecting free expression, which underpins global democracy. Let's hope she can lend her weight to this just cause in the spirit of humanity and freedom.

Rolland McKellar

continued from page 2

Division One, Division Two and Three, Colts and Women's Rugby, so I am wishing every rugby club in our province all the very best for this year, while having rugby clubs like Patea, Toko, Okaiawa, Kaponga and Kaitake having re-emerged back into these mighty rugby competitions.

Look, rugby in general, especially here in our province during the winter seasons held quite a bit of money, but it seems our younger generation now do other sporting codes, and are doing extremely well. So if rugby wants to become popular again, our rugby union must look at sending ex-Taranaki and ex-Taranaki All Blacks out to

all our primary, intermediate and secondary schools showing these students all that can be achieved by playing rugby and also teach them ball skills, even some of our women who have represented our country's women's rugby teams.

Now if this isn't done our province in the future may not have any rugby clubs or even a representative rugby team, both in men's and women's rugby.

*Tom Stephens
New Plymouth*

The Pfizer vaccine

By now, the reader will be well informed of the released, confidential, Pfizer data collected by Pfizer,

in the first two and a half months of the (redefined) vaccine roll-out between December 2020 and the end of February 2021.

This report, titled "Cumulative Analysis of Post-authorization Adverse Event Reports of PF-07302048 (BNT162B2) received through 28-February-2021", was released in response to a Freedom of Information Act request (FOIA) by the group 'Public Health and Medical Professionals for Transparency' filed in September 2021, USA; demanding data that Pfizer had submitted to the FDA as part of the (Emergency use) license application.

The data, released under that title, recorded 1200 vaccine related deaths and 42,086 adverse events

(harms).

In two and a half months interestingly, Pfizer had redacted the total number of people who had received the vaccine at the time the document was published.

Of course, fact checkers already argue the adverse event reports collected by Pfizer as result of their vaccine, cannot possibly tell us whether the vaccine caused the adverse events and Deaths. Only that they were reported proximate to and after the injections. Therefore, claims that they did are unsupported.

Other professionals, Dr Peter McCullough for one, argue that known 'criteria for Causality' (Bradford Hill), have already well and truly been satisfied.

I, being non-expert in practically everything, have

no opinion.

This will be very discomfoting to the reader being urged to take their children and themselves for their third and fourth shots of the very same product the documents above are reporting.

*Roger Morris
Oeo.*

Observations

Not a week goes by without people moaning about the high cost of living, especially at supermarkets. It was my observation, and discussions with people, like in my area in New Plymouth, that there are more pets (cats and dogs) here than people. If people can't afford food on the table, why own cats

and big dogs? Priorities. Or planting vegetable gardens?

Another issue, we hear often, without a day going by is mental health, the suicide issues, diabetes and bestiality. In some these issues all round up together. Any do-gooders, caregivers, health workers as well as the people in these groups need I believe a huge reshuffle, and these groups should get into work systems, and off the couches, into community work. Most of all these issues can be helped by getting people outdoors and doing projects, not sitting around in circles holding hands and talking.

*Ian McAlpine
New Plymouth*

Twenty eight publishers join NPA's collective bargaining

Twenty eight publishers have to date chosen to join the News Publishers' Association's (NPA) collective bargaining initiative to seek fair payment from Google and Facebook for the use of Kiwi journalism on their platforms.

The diverse group of publishers employ NZ journalists across more

than 100 titles, providing valuable national and local news to the community.

The NPA has also announced the appointment of Chris Janz and David Eisman as its representatives in the collective bargaining process.

Both have extensive experience in the Australian market, where a bargaining code led to more than

NZD200 million in annual payments from digital platforms to the news media.

NPA general manager Brook Cameron said fair payments were vital to the sustainability of independent journalism.

"Google and Facebook have built businesses of unimaginable scale and power, using journalism paid for by others while

dominating the digital advertising market.

"We are seeking an outcome that allows independent New Zealand news publishers to keep investing in great journalism because a thriving Kiwi media sector is critical to a healthy democracy."

"It is fantastic to welcome people of Chris and David's calibre, who understand the importance of fair payments in supporting a free and independent press."

Chris was previously Nine's Chief Digital and Publishing Officer, with responsibility for The Sydney Morning Herald, The Age and The Australian Financial Review. David was Nine's Director of Subscriptions and Growth, leading strategy and new initiatives for those mastheads, including their partnerships with digital platforms.

The Commerce Commission has

provisionally authorised the NPA's collective bargaining application, with that provisional authorisation allowing NPA to start collective negotiations while the Commission completes its consideration of the NPA's main application. The application is being made on an "opt-in" basis, with it open for NPA members and other independent owned news publishers, to choose to participate in the collective bargaining initiative.

Lifestyle Properties Wanted!

Considering Selling or Subdividing? Lets chat.

Call me for a FREE appraisal. Lets make your dreams a reality!

Michelle Hofmans

Your best SHOT in Real Estate

M: 027 531 7684

E: michelle@fntaranaki.co.nz



Licensed REA 2008



FORKLIFTS

CONSTRUCTION EQUIPMENT



- RENTAL
- SERVICE
- PARTS
- NEW & USED SALES

AGENTS FOR NILFISK FLOORCARE PRODUCTS



AB EQUIPMENT

31 Hurlstone Drive, New Plymouth

Mike Robinson - Sales Specialist

Ph (06) 757 5197 or 0800 30 30 90

www.abequipment.co.nz

MAYOR'S COMMENT

South Taranaki Mayor, Phil Nixon says Government plans to force through the three waters reforms virtually unchanged is a worrying attack on property rights and community voice.

The recently announced changes embed an unusual public shareholding model, where shareholders would have no rights other than the ability to decide whether or not to privatise services, he says.

They also propose another level of complexity in governance, taking most councils even further away from a position of influence. "This tinkering around the edges doesn't make



PHIL NIXON, MAYOR OF SOUTH TARANAKI.

the model itself any more palatable for our communities," says Mayor Nixon.

"This is not good for local democracy or local decision making as the Government has continued to force this reform through without the consent of its stakeholders or their communities."

Mayor slams three waters reforms

"For us to hand over millions of dollars of assets our communities have paid for in return for a single share of no real value is absurd. If the Government can decide by decree to redefine ownership in this way, it sets a worrying precedent over ownership on a far wider basis." Mayor Nixon has also criticised

the further watering down of community input, which will particularly affect small councils.

"While I'm disappointed in the Government's initial version of the legislation, we're committed to working to get a better model in place that works for everyone. Before the government had started talking Three

Waters reform our three Taranaki district councils had initiated work to see if there were benefits from us merging our water services. We completed two stages of this review before we agreed to put the work on hold due to the government's proposal. The results of this work showed benefits of us working together in

Taranaki, which we believe would be a far better model for our communities than the model the government is forcing on us," he says.

I'd urge everyone to get in touch with their local MPs to ensure they know what you think about this plan, and I'll be encouraging significant local participation in the select committee process."

Community Board supports defibrillators for coastal towns

The Taranaki Coastal Community Board has voted to support a defibrillator and case for both Opunake and Manaia. Both these defibrillators would be available 24 hours a day, and the Community Board voted \$3450 for each of them. The Opunake defibrillator would be based at the Opunake Medical Centre and the Manaia one would be at the Yarrows building.

Community Board member

Liz Sinclair notes that this comes soon after teammates used a defibrillator to revive a Coastal Rugby Club player who had collapsed during a rugby practice.

The Community Board also voted \$3000 to board the back wall of the skate ramp at the Opunake Skate Park and paint a mural. Liz Sinclair said she had seen children fall through that gap before.

These grants and another to the Pihama Cemetery Board brought the money available in the Community Board's discretionary Fund down to \$124.

"It's been a pretty tough year, but we've done a major list of things," said board chair Andy Whitehead. He said that this year they had granted more money to projects in the southern end of the ward, while in previous years they had

been more likely to support projects at the northern end.

Liz Sinclair said this year there had been a number of new groups coming to them asking for money who may be unaware of other funding options that maybe available.

Board member Sharlee Mariekura said the board could have a role in advising some of these groups about these other options.

Advertisement for 'a simple cremation & burials' with a tree logo and contact information: 0800 236 236, www.asimplecremation.co.nz

Advertisement for Rockgas Taranaki with a truck image and text: 'You can rely on us for your energy needs', 'Transform your home - all your hot water, space heating and cooking needs from your trusted local Rockgas supplier.'

RIGHT: The puppy and the goose - great mates for life.



Advertisement for 'OPUNAKE & COASTAL NEWS' with a wave logo and text: 'LIKE ONE OF OUR PHOTOS? Did you know that photos that are published in our paper are available to purchase? Call in and see us today.'

Look out for our next issue. Thursday June 16.

Large advertisement for Dunlop Insurance with a house icon and text: 'Dunlop Insurance', 'QUALITY, PROFESSIONAL INSURANCE ADVICE', 'Personal • Rural • Commercial', '100% Taranaki owned & operated'

Advertisement for CRAWFORD AGRITECH Ltd with a red tractor image and text: 'CRAWFORD AGRITECH Ltd', 'TRACTOR & MACHINERY SERVICE & REPAIRS', 'ON FARM SERVICING', 'AIR CONDITIONING SERVICE, REPAIRS AND HOSE MAKING', 'SPARE PARTS & FARM OILS', 'IMPLEMENTS & ATTACHMENTS - SALES AND SERVICE', 'FACTORY TRAINED TECHNICIAN', 'TARANAKI & WANGANUI INDEPENDENT FERGIE TRACTOR SPECIALISTS', 'MASSEY FERGUSON | FORD | SAME | LANDINI | ISEKI | VALTRA | MATBRO INTERNATIONAL | MERLO | DAVID BROWN | RENAULT | URSUS | JOHN DEERE', 'MORRIS LUBRICANTS the winning formula since 1869'



Meet Jason....

Is forever buying vehicles and machines saying he will flick them on to make some money but still has them all and wonders why he's got no coin....

Self proclaimed perfectionist but he still uses a chainsaw to cut pailings for a fence....

NEVER (underlined, capital letters, bold, etc - I mean never) ask him for a 'Dad Joke!' Even though he's not a dad his library is inexustable and at times rather exhausting....

We have heard some reports that he was the class clown but find it hard to believe.....

Works like an absolute trojan, super fast learner and is an awesome all-round operator

Was promised a work ute upgarde ages ago if he could keep his current one tidy.....i guess he really likes the old one....

Was once told coming to work without his log book is like coming to work without any pants on!!!!!!

We all love our Jase, he brings a great sence of humour and gives us all something to laugh about

Get in touch if you want to meet Jason in real life or have work for us to look at - info@excavat.co.nz | [0800 314 437](tel:0800314437)

FISHER TRANSPORT

Division of Fisher Mechanical Services Ltd

Bulk Haulage Specialist / Metal cartage
Palm kernel delivery / Race fines / Earthmoving

JADE FISHER
021 478 700
jade@fishermechanical.co.nz

12 Arthur Road
Paraite, Taranaki
4373 New Zealand

Garage Doors Specialists



WINDOWS • DOORS • CONSERVATORIES

- Sectional, Roller, Tilt.
- Automatic Openers
- Repairs & Maintenance

Call for a Free Measure & Quote
Email: sales@rylocknp.co.nz | Ph. 06 758 8073

W.O.F. • Mechanical Services • Engine Services
General Repairs • Dashboard warnings
Diagnostics • Punctures
Batteries • Floats • 2 +
4 Wheelers • Contracting
Equipment • Mowers
Trailers • Towing • Heavy
machinery • Mechanical
Pipework • General Repairs
Services • Engine Repairs
Dashboard warnings • Diagnostics • New Tyres
Punctures • Floats • 2 +
4 Wheelers • Contracting
Equipment • Mowers

AUTOMOTIVE + ENGINEERING
1759 South Road • TATARAIMAKA
027 4416 330 • 752 4933 • www.thegaragejsme.co.nz



WAREA

Covering Coastal Taranaki

- Supply and deliver of all types of race fines, drainage and aggregate
- Farm Race and tanker track Maintenance
- Bulk Bark Supply and Deliver
- Bulk Cartage

Call Sam on 027 428 4706
www.jonesquarry.co.nz

OPUNAKE FIRE SERVICE

Four minutes

The fire hydrants around our town are vital for us when we are called to a fully involved fire. Our trucks only carry 2000 litres of water, the nozzles we use require 500 litres of water per minute to work effectively. Doing the maths, that gives us four minutes of water, and four minutes for us to get another water source up and running. Our best source of water is of course the hydrants, and being able to find these quickly and get them open is one of our first priorities. From time to time the hydrants around town can become neglected, covered in vegetation, overly dirty or even completely covered over. As you can imagine, trying to find hydrants in this condition can be tricky, and even harder at night. Then before we can open the hydrant cover, we need to clear the grass or vegetation around it. Going back to our four minutes of water in the truck, using precious minutes finding and clearing hydrants can be the difference between getting enough water before running out. Your help in keeping



An obscured fire hydrant.

these hydrants free of grass and vegetation would be of great help to us. If you have a hydrant outside your property and it needs a clean, by all means give it a spruce up by clearing grass from around the edges, and any debris from on top of it. We are lucky to be able to work alongside the women and men from the volunteer St John ambulance service in Opunake. Their care and dedication to the Opunake community is something that should be acknowledged

more. On many occasions we have worked side by side, and we are thankful that like us, these volunteers go out of their way to assist those in need. We would like to welcome Steve Bennett to our brigade. Steve and his family have moved to the sunnier side of the mountain from Stratford. Steve has the rank of Qualified Fire fighter and will be a welcome addition to our brigade. Recently we have attended three separate motor bike

accidents and a motor vehicle accident, where thankfully, everyone involved escaped with minor injuries. We have also attended a chimney fire, a garden shed fire, a vegetation fire, a fire that was out on arrival and two medical events. After the wind blew part of a roof off we were called to cover it with tarpaulins.
Ngā mihi

Andrew Pentelow (CFO)

Kaponga WI May meeting features interesting necklaces

The Kaponga WI had their May meeting at the home of our treasurer and host for the day, Sharyn Hurley. Jo Ellis the president opened the meeting by thanking everyone.

The aspirations were read, and we all explained the background to the necklaces worn. Some of them had a very interesting meaning to the members. The minutes of last meeting were read by our secretary Fiona Collins. The raffle was won by Fiona Collins and the dish stayed with last month's recipient as she was not in attendance. The competition winners were: Bouquet of weeds – 1. Jo Ellis. 2. Dorothy Hughes. 3. Fiona Collins. Club Sandwich – 1. Diane West. 2. Dene Lines. 3. Dorothy Hughes and Fiona



Kaponga WI ladies with Pam Redpath (centre).

Collins. Egg Cup. 1. Dorothy Hughes. 2. Jo Ellis. 3. Diane West. President Jo Ellis then read a story which all members enjoyed and then we had lunch. After lunch we had the privilege to sit back and enjoy the life story so far from Sharyn's sister Pam Redpath. Pam is a 64 year old who was born and raised in Kaponga. She never followed in the family paths of farming

when she left school like her siblings. She became a teacher. She said that her experience growing up set the path of her life. She has always been an outdoors person and was taught by a couple of our members at Kaponga primary. She now lives in Wellington with her husband and has three adult children, who live overseas. She has travelled and taught in New Zealand and in other countries, obtaining some high positions in schools she

has taught in. She absolutely loves tramping and bike riding. She is on study leave at the moment and thought she would take advantage of the fine weather, to bike on her touring e-bike from Wellington to Kaponga to visit her sister. On the way up she cycled on scenic routes / side roads where appropriate to avoid the busy traffic on the highways. It has taken her a couple of days to get here. She bought her e-bike into the lounge and explained to us how it works. She said that the bike does not do all the work for you, you still have to pedal the bike but it is a lot easier than a normal bicycle. Sharyn thanked her sister for talking to us. A very enjoyable day held by all.

Jo Ellis



ASBESTOS REMOVAL

Providing Safe, Certified and Professional Asbestos Removal for both Residential and Commercial buildings



021 194 3201



SHEDS & GARAGES

Custom designed commercial & residential sheds constructed & delivered to the highest industry standards, backed by our Professional Guarantee



027 555 0591

Coastal and Rural

Rental properties

We ensure that the communication between owners, tenants and ourselves create and maintain good relationships.

Happy tenants = happy owners.
Call me today to discuss your property.



Colin Tyler
Property Manager
M 027 542 1853 P 758 4397
colin@taranakiharcourt.co.nz

Harcourts Rentals

gibsonplumbing LTD.

CERTIFIED

Plumbing, Gasfitting and Drain Laying

Plus! Roofing, Wood Fires and other Heating Solutions

06 761 8757 027 445 7164
gibson.plumbing@xtra.co.nz

Call to preserve Lizzie Bell cart

Of all the vessels lost on the Taranaki coast, the Lizzie Bell remains one of the most well-known.

Wrecked off Oeo with the loss of 12 of her 18 crew on the night of July 24 1901, the cemetery at Pihama where the dead are buried now bears its name.

The morning after the wreck, a family cart owned by local farmer John Pettigrew was used to carry the bodies of the dead sailors from the beach to the Oeo Hotel.

On May 24 members of the Pihama Cemetery Board, supported by two descendants of John Pettigrew were at the May meeting of the Taranaki Coastal Community Board applying for \$6125 from the board's discretionary fund to restore the family cart used on that occasion so that it could be permanently kept at the cemetery.

Even before the Lizzie Bell was wrecked, the cart had already played a leading role on the Taranaki coast. William and Susan Pettigrew had brought it with them to Opunake from Auckland in 1882. William and his brother-in-law Adam Laybourne set up one of the first shops in Opunake at a time when the only way into town was by ships which would anchor in the Opunake bay. Goods and passengers would be rowed out and loaded on to drays in the surf, like the one the Pettigrews owned and then taken into town. There were lidded bins on each side to keep the flour and sugar dry and clean. The cart was also used to deliver goods around the district. When William's oldest son John bought the Jerseydale farm at Pihama it was used for farm work and



The Pettigrew family cart led the parade at the Pihama School centenary in 1987. The driver was Jim Symes with Maree, Craig, Joanne and Bryan Dorn, great grandchildren of William Pettigrew.

later taking the milk to the dairy factory.

Years after the Lizzie Bell was wrecked, John's son Doug continued to use the cart on the farm.

"He preferred to use it in the winter as it didn't mark the paddocks as bad as the new Fergie 24 tractor," says his daughter Joy Dorn.

Joy and her brother Gordon Pettigrew were at the community board meeting supporting the Cemetery Board's application.

"I can remember feeding out in it with my Dad in the 1950s," said Gordon. He says over the years the cart's condition has deteriorated.

"It was stored in a shed on the farm, and it was open to the south.

"Joy and I are probably

the last in our family to recognise its significance. If the cart is left to dissolve in the elements you can't recover the history. I was originally going to do this on my own. Now it's got to happen as it's deteriorated a lot."

As years went on the cart has played a major part in local celebrations like the Pihama School 75th jubilee, and its centenary in 1987. On that occasion the cart led the celebration with William's great great grandchildren Maree, Craig, Joanne and Bryan Dorn riding in it. The cart also put in an appearance at a ceremony at the cemetery organised by the Merchant Navy Association in 2019.

Joy says their family want

the cart to be kept at the cemetery on a permanent loan from their family. The Pihama Cemetery Board is planning to have the cart restored and placed in a waterproof building next to the Lizzie Bell Memorial.

There was some discussion about the significance of the Lizzie Bell wreck with various artefacts from the barque ending up in different places around Taranaki.

Taranaki Coastal Community Board member Bonita Bigham said she thought it was a worthwhile project but asked if any advice had been sought from anyone with expertise in historical restoration.

"My challenge is that you are literally trying to put the cart before the building. There seems to be a rush to do the cart, which I understand, but what's the bigger project?"

The Community Board voted to grant \$2500 subject to the rest of the funding being secured elsewhere, and to there being a bigger plan which would include a plan for funding and advice from professional conservators.

New Hawera school opening date set

Students from both Hāwera Intermediate and Hāwera High School will combine on the existing High School ground using their buildings and temporary classrooms at Bayly Park at the beginning of next year, to form the new year 7-13 school.

Eight classrooms will be relocated from Hāwera Intermediate School in September and October this year. Further additional teaching spaces will be added by the Ministry of Education.

The new school will be home to 1000 students; the existing high school site will require redevelopment whilst still in use to deliver

the full vision of one new school. Landscaping and other remedial work will be carried out on the school site.

"Even though this is an interim solution using the existing teaching spaces and temporary buildings, it's important that it feels like home for students and teachers," Hautū - Te Mahau, Te Tai Whenua Jocelyn Mikaere says. "The school opens its doors on the first day of term 1 next year as a combined school. It's our job and our goal to ensure the buildings will provide a welcoming environment for everyone."

Next steps include clearing the Hāwera Intermediate site.

The Ministry of Education will continue to keep the community informed as this work progresses.

A community meeting will be arranged with residents to discuss what the temporary teaching will look like, where it will be located, and most importantly, reassuring all residents that this is a temporary solution made in the best interests of the education for local students.

The Ministry will work collaboratively with all interested parties on what will happen with the unoccupied land as they work through the legal disposal process.

NURSERYRHYME HAWERA

NurseryRhyme Ltd

Stunning winter clothing instore (Prem-6yrs), and wet weather gear.

Plus gifts, soft toys, linen and more

158 High St, Hawera
06 278 8035 • OPEN Mon-Sat
See us on Facebook



Knit and Sew

Quality winter stock now in store



Phone: 06 765 4181
202 Broadway, Stratford
www.stratfordknitandsew.com



Phone 06 761 8999—027 256 8083

Opunake's Biggest Range of Tyres



Come in and see us for a quote. We also stock a big range of batteries & automotive accessories.

38 Ihaia Road, Opunake

Email: accounts@agrimec.co.nz

POWERWORX

Power Supply Rural & Residential

Design, upgrade and repair overhead and underground power supplies

- Powerco Approved
- Underbores - wires and pipes
- Powerline maintenance
- Fault repair
- Subdivision power installation
- Vegetation control around powerlines
- Network connections
- Transformer & line upgrades
- Specialists in rural power servicing and installation

0800 877 746

Taranaki Region
Contact Bruce Wilson Manager
58 Glover Road, Hawera Ph: 06 278 4514
Email: powerworx@obertech.co.nz

More cost of living relief for Taranaki families

Grant Robertson was in town last week for this year's Budget roadshow, which sets out the next steps in our plan to build a secure future for New Zealand. I wanted to make sure that you'd heard about a couple of key Budget initiatives, including a cost of living package to support people here in Taranaki.

Right now, the fundamentals of our economy are strong. We have a record low unemployment rate, economic activity that is higher than it was before COVID-19, and debt lower than most countries we compare ourselves to. Our strong health response



GLEN BENNETT
MP FOR NEW PLYMOUTH

protected our economy through COVID-19, and we've pulled through better than almost anywhere else in the world.

But we know that, despite these positive indicators, things are tough right now

for many families, as global inflation affects prices here at home. That's why with Budget 2022, we're taking further steps to ease the financial pressure on Kiwis with a new cost of living package.

This package includes a new temporary payment to help Kiwis with higher food and power bills. This will benefit more than two million people earning up to \$70,000 a year who don't already receive the Winter Energy Payment, including many here in Taranaki. Alongside this payment, we're tackling transport costs by extending our fuel tax cut, reduced road

user charges and half price public transport for further two months, and making half price public transport permanent for people on low incomes. We're also taking action on supermarkets to make sure Kiwis are paying a fair price at the checkout.

It is important we do what we can to take the hard edges off the global factors that are affecting us here in New Zealand, and these practical measures will help families here in Taranaki and across the country.

I'm proud of this cost of living package, but it's not the only part of the Budget that will benefit people in

Taranaki. To secure our future, we're making our largest ever investment in the health system and Pharmac, ensuring more Kiwis can access lifesaving medicines and treatments, and we're delivering more paramedics and ambulances, to ensure urgent care is on hand when needed. We're also improving support for Kiwis with serious and acute conditions, as part of our work to build a new mental health and addiction system. As we do all this, we'll continue to carefully manage the books – and our careful fiscal management means we return to surplus quicker

than National did after the global financial crisis.

There's a lot more in the Budget that will benefit people here in New Plymouth, and if you'd like to know more, I'd encourage you to check out labour.org.nz/budget2022. Whether it's helping businesses switch to renewable energy or futureproofing our health system, I know that our Government's actions will make a real difference for Kiwis, now and in years to come.

Glen Bennett
MP New Plymouth

Road toll raises licensing again

ANZAC weekend's road toll of 11 has prompted renewed calls for greater driver education and the problems with New Zealand's driver licensing system.

The spotlight, falling again, on young drivers.

Driver education programme, SADD (Students Against Drunk Driving) has been available at secondary schools for many years now.

The Community Driver Mentor Programme, promoted by Waka Kotahi (NZ Transport Agency) has also been available for a while now in some regions via contracted providers.

But it's not so easy for all country kids to access.

Driver licensing is key to keeping rural New Zealand moving.

But it's so difficult to get one.



BARBARA KURIGER MP
TARANAKI-KING COUNTRY

In 1987, under a Labour Government, the current staggered system of learner, restricted and full licences came into force. I doubt it's delivered what its designers intended it to do — which I hope was to produce a nation of extremely capable drivers. Instead it's become a handbrake.

Driver research estimates 70,000-90,000 New Zealanders struggle to access our licensing system or are stalling part way through.

Forty percent of learner licence holders won't progress to their restricted or full licences, yet 70% of jobs require at least a restricted licence, as necessary.

But only 5% of young people will leave school with a full driver's licence, leaving thousands heading out into the world without one.

Rural people need a driver's licence to get to work. They live in places where no public transport exists.

It's a no brainer to make sure both theory and practical licence tests are easily available and affordable within rural communities, across all classes.

And I acknowledge here that National was in government

when practical tests in rural towns stopped because they lacked traffic lights and/or roundabouts.

Today, the wait times for tests in urban centres can mean travelling hundreds of kilometres to approved providers, with days off school or work, often more than once, and the process taking months.

Another barrier featured in April 21's King Country News — the severe shortage of truck drivers created in part by regulation, especially health and safety.

Ōtorohanga Carrier Association chair Brendon Barker said instead of young people starting their careers by learning to drive trucks around the yard, and accompanying drivers during school holidays, they were now forced to pay thousands of dollars to work their way up through the various licences via driving schools.

Linehaul passengers are also not allowed, so going to work with Dad in his truck, is a thing of the past.

Like my colleague Dr Shane Reti, who recently suggested nursing training should be brought back into hospitals,

so too could on-the-job training in the transport industry.

The Government could put its majority to good use and remove the barriers which would allow on-site training in the transport industry once again.

More importantly, it could also review the entire system of obtaining a driver's licence, whatever the class. Rural communities rely heavily on the goodwill of volunteers, especially when it comes to emergency services.

If it's not easy to obtain a Class 1 driver's licence, and specialist licences are even harder ... where will the next lot of fire engine and ambulance drivers come from?

PS. Just a day after this opinion piece was sent out to media the Government announced on May 4 it will fund driving lessons and tests for 64,000 people. But despite that pledge the issues I express above remain for rural communities.

Barbara Kuriger
MP Taranaki-King Country

SANDFORDS
RURAL CARRIERS



For competitive pricing on all your rural cartage requirements - Give us a call today!

Taranaki wide

Phone 0800 707 404

Steph Lewis

MP for Whanganui

Keep in touch:

steph.lewismp@parliament.govt.nz

labour.org.nz/stephlewis

Whanganui office: 06 348 1010

Hāwera office: 06 278 2180

[f /stephlewiswhanganui](https://www.facebook.com/stephlewiswhanganui)

[@stephlewislabourwhanganui](https://www.instagram.com/stephlewislabourwhanganui)



Authorised by Steph Lewis MP,
Parliament Buildings, Wellington



Labour's economic mismanagement hurting farmers

Grant Robertson's refusal to rein in spending and take meaningful action to dampen inflation is piling pressure on primary industries, National's spokesperson for Rural Communities Nicola Grigg says.



Nicola Grigg MP, National Party's Spokesperson for Rural Communities.

"This Labour Government has unleashed unprecedented levels of spending in last week's Budget, with more than \$9.5 billion in new spending forecast this year alone. To

put it in context, they are now spending 68 per cent more, or an extra \$51 billion

per year, since coming into office.

"This out of control spending is putting huge pressure on the economy and is driving inflation to a record 30-year high, with the cost of farm inputs rising by 9.8 per cent since the March quarter last year.

"This week we saw another 50 basis point jumps in the OCR, the first back to back 50 point increase since the OCR was introduced – which has never happened before

and will effectively double interest rates compared with last year.

"A farm carrying \$4 million in borrowings that sees a 100 basis point increase in their interest rates has to pay an additional \$40,000 a year in interest costs.

"On top of that, there are more than a dozen new law and regulatory changes being piled onto farmers by the Government, so it's all starting to add up for our rural communities.

"Agriculture Minister Damien O'Connor's Budget 2022 press release announced a \$1 billion spend on primary industries, but this really needs close scrutiny. It is full of vague waffle like \$118 million for 'advisory services' to 'support farmers', \$40 million for Stuart Nash's 'transformation' of the forestry and wood processing sectors, as well as \$32 million for Meka Whaitiri's fund to crack

down on farmers with increased compliance, enforcement and on-farm inspections.

"The cost of doing business on-farm is skyrocketing. For this sector to continue to carry the New Zealand economy during these turbulent times, the Government needs to rein in spending on compliance and 'advice' and, instead, cut costs for the most productive sector of this country."

Government investment boosts coastal shipping in Aotearoa

New Zealand is a step closer to a more resilient, competitive, and sustainable coastal shipping sector following the selection of preferred suppliers for new and enhanced coastal shipping services, Transport Minister Michael Wood has announced.

"Coastal shipping is a small but important part of the New Zealand freight system, which is why the Government is investing in making coastal shipping a more viable alternative to strengthen and diversify our domestic supply chain, helping to secure New Zealand's recovery from COVID-19. As a lower emissions transport mode, investing in coastal shipping will also help us achieve our decarbonisation goals," Michael Wood said. The Government has

committed \$30 million of funding for coastal shipping through the National Land Transport Programme (NLTP) to improve domestic shipping services, reduce emissions, improve efficiency and upgrade maritime infrastructure.

Waka Kotahi worked with the wider freight industry (NZ Shipping Federation, Port Company CEO Group, National Road Carriers, KiwiRail, and Te Manatū Waka - Ministry of Transport), to select four applicants for co-investment in new and enhanced coastal shipping services through the NLTP.

The four preferred suppliers are: Coastal Bulk Shipping Ltd, Move International Ltd, Swire Shipping NZ Ltd and Westland Mineral Sands Co (2022) Ltd.

"With the freight industry's

support, these additional services will help to resolve immediate challenges to the coastal shipping and the wider freight sector, address some of the current issues facing the international and domestic supply chains and provide a platform for future growth across all modes with increases in capacity and capability for both new and existing bulk materials and containerised cargo," Michael Wood said.

"Each of these four selected suppliers will bring at least one additional coastal shipping vessel into service, and together this will improve the resilience of the overall freight supply chain.

"The four preferred suppliers will invest over \$60 million through their proposals, resulting in combined investment in the sector of over \$90 million.

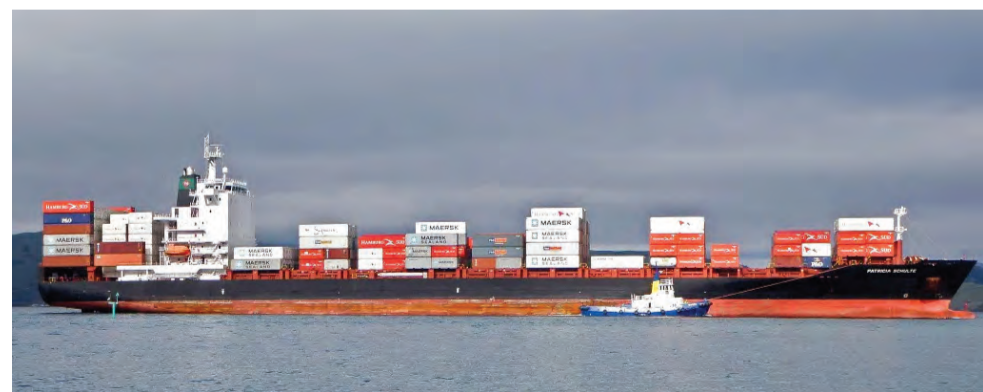
"When the new services are fully operational, it is estimated they will remove around 35 million kilometres of truck travel from New Zealand's roading network every year, reducing wear and tear and improving safety for road users, while at the same time creating new employment opportunities for mariners and supporting regional

development. This will also support our commitment in the recently released Emissions Reduction Plan to reduce emissions from freight transport by 35 per cent by 2035.

"Through this funding we are taking an important step towards better utilising the blue highway, improving our freight system, and futureproofing our national

supply chain.

"In the meantime, we're continuing work to mitigate supply chain problems caused by COVID-19, which includes increasing capacity through KiwiRail, extending the aviation support package so businesses can tap into international markets, and working with the sector to address issues as they arise," Michael Wood said.



Coastal shipping is to become more viable.



Woodward's FIREWOOD

Animal Bedding For
Stand Off Pads
Calf and Goat Sheds
Wintering Barns

- Untreated ground up waste wood —
- Raw material stockpiled then ground to order —
- Pick up or delivered to your farm —
- 9m³ truck loads —
- 65m³ truck loads —

06 755 2047

124 De Havilland Drive, Bell Block • office@woodwardsfirewood.co.nz
www.woodwardsfirewood.co.nz



Furniture Zone
make your house a home

FURNITURE ZONE'S LONG WEEKEND SALE

20% OFF

STOREWIDE*

PLUS 500 DAYS INTEREST FREE ON PURCHASES \$999 AND OVER*

4 DAYS ONLY FRIDAY 3 JUNE - MONDAY 6 JUNE 2022

5-YEAR WARRANTY ON ALL MATTRESSES

WINZ ACCREDITED. WINZ QUOTES ACCEPTED

PH 06-215-3020 | NEWPLYMOUTH@FURNITUREZONE.CO.NZ
298 DEVON STREET EAST, NEW PLYMOUTH
OPEN TUE-FRI 9:30AM-5PM & SAT-SUN 10AM-5PM

*Sale ends 06 June 2022. Terms, conditions and exclusions apply. See instore for details.

Magical Musical Moments: Freddie Mercury and Queen

At the Live Aid Concert (to raise money for victims of the 1983-1985 famine in Ethiopia) on July 13, 1985 at London's Wembley Stadium, Freddie Mercury and Queen performed in front of a crowd estimated at 72,000. The event was beamed around the world to a further 1.9 billion viewers in 150 nations. The band played six numbers including the standout *Bohemian Rhapsody* and ending with *We Are the Champions*.

By most accounts Queen's performance was the stand out one of the entire concert which featured many famous acts such as Dire Straits, Paul McCartney, Elton John, David Bowie, U2, Sting and The Boomtown Rats (with concert organiser Bob Geldoff). Queen's performance was voted the Greatest Live Performance in the History of Rock in a 2005 poll by many musicians, journalists and executives in the industry.

If you look up *Bohemian Rhapsody Live Aid 1985* on Google (which I strongly recommend) you'll see Freddie Mercury giving a masterful performance closely relating to the crowd, before sitting down to play the piano with finesse.



Roger Taylor, John Deacon, Freddie Mercury and Brian May.

"He plays with incredible rhythm, incredible passion and feeling," explains band member Brian May.

It must have been a warm, night as Freddie is shirtless and in shorts. Majestically backed by Brian May (guitar and vocals), John Deacon (bass guitar) and drummer Roger Taylor, the performance is compelling.

"It wasn't just about his voice, but the way he commanded the stage. For him, it was all about interacting with the audience and knowing how to get them on his side. And he gave them everything....", commented one of Queen's roadies.

Queen were founded in 1970 in London. They

played hard rock, heavy metal arena rock and pop rock. Their second album (the first one to make the charts) was entitled *Queen II*. A later one *A Night at the Opera* had their best known single *Bohemian Rhapsody* which (when released as a single) was a British number one for 9 weeks. However, their best-selling single was

Another One Bites the Dust.

Queen have won many awards including the 1990 Brit Award for Outstanding Contribution to British Music and in 2005 the Ivor Novello Award for Outstanding Song Collection. In 2001 Queen were admitted to the Rock and Roll Hall of Fame and in 2003 to the Songwriter Hall of Fame. Estimates of

records sold by Queen range from 170 to 300 million copies.

Freddie Mercury was born September 5, 1946 as Farrokh Bulsara, and he was just 45 when he died on November 24, 1991 from an AIDS-related illness (bronchopneumonia).

His parents were Parsi-Indian. After time in India his family settled in the United Kingdom. He attended Isleworth Polytechnic and Ealing Art College – graduating with a Diploma in 1969.

He had a long term relationship with Mary Austin (1970-1976) and later Jim Hutton (1985-1991).

Freddie wrote many of Queen's hits including *Killer Queen*, *Bohemian Rhapsody*, *Somebody to Love*, *We Are the Champions*, *Don't Stop Me Now* and *Crazy Little Thing Called Love*.

A superb feature film was made about Freddie Mercury called *Bohemian Rhapsody*, starring Rami Malek who is brilliant in the role, including singing many of Queen's hits. Rami won the Hollywood Academy Award ((Best Actor), BAFTA, Golden Globe and Screen Guild Award for the film.

Rolland McKellar



REASONS TO LIST WITH BAYLEYS

List and sell with Bayleys and earn Double Airpoints Dollars™

Bayleys is the only full service real estate company that offers you Airpoints Dollars™ on your listing.

List your property with Bayleys by 30 June 2022 and you could earn up to 1,000 Airpoints Dollars when it sells - perfect for spending on a huge range of quality rewards and experiences available on the Airpoints™ Store, instore at Mitre 10, on Air New Zealand flights, upgrades, or Koru memberships*.

Bayleys Taranaki
06 759 0415

Bayleys Hawera
06 278 1630

Success Realty Taranaki Ltd, Licensed under the REA Act 2008. *Every \$1,000 of the sale price achieved will earn you 1 Airpoints Dollar, to a maximum of 1000 Airpoints Dollars. Offer available on properties listed exclusively with Bayleys 20 April - 30 June 2022. Only available for residential, rural and lifestyle properties. Airpoints Dollar accrual requests will be submitted to Air New Zealand after the settlement of sale. Only available to vendors on sale transactions. Further terms and conditions apply, visit bayleys.co.nz/airpoints. Airpoints programme terms and conditions apply.



ALTOGETHER BETTER

Residential / Commercial / Rural / Property Services

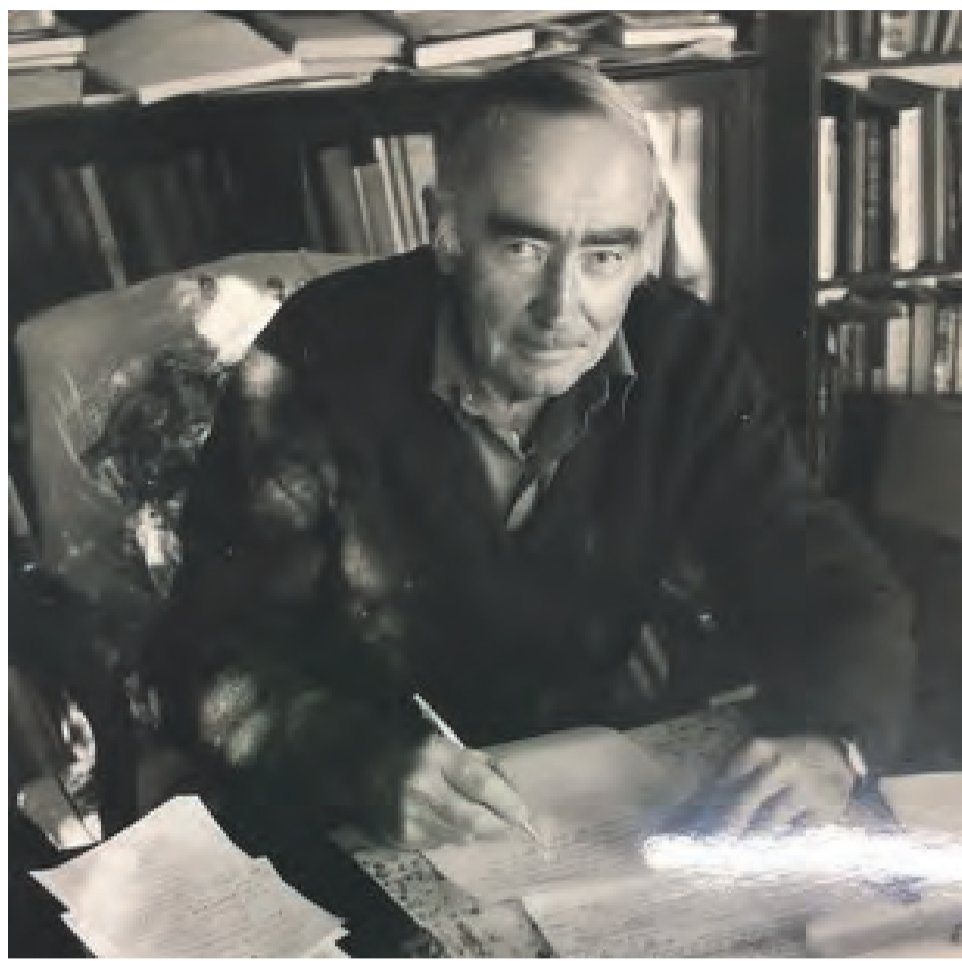
Douglas Stewart (1913-1985)

One of our most distinguished literary figures Douglas Stewart was born in Eltham on May 6, 1913. He eventually headed to Australia (1938) where he made his literary name and was described as “the greatest all-rounder of modern Australian literature.”

What exactly did he do? – well basically everything you can think of. He published volumes of short stories (eg. *A Girl with Red Hair*, 1941), essays, word plays, biographies, anthologies (eg. *Modern Australian Verse*, 1964) and was a major figure while working as Literary Editor for *The Bulletin* (1938-1959) and Editorial Advisor for publisher *Angus and Robertson* (1962-1972), who published Ronald Hugh Morrieson’s first two novels *The Scarecrow* and *Came A Hot Friday*.

It was here that he received an angry “explosive letter” from Ron, who was frustrated that his third draft novel (eventually published posthumously as *Predicament*) was not being accepted despite rewrites.

Perhaps the best known of his word plays was *Fire On the Snow* which was broadcast on the ABC in 1941 and later in the UK on the BBC. It was all about Captain Robert Falcon Scott’s final and tragic expedition to Antarctica



Douglas Stewart.

and the South Pole. Much of Douglas’ writing reflected his love of nature and the words impressionistic imagery have been used to explain his style. Later in life his *Springtime in Taranaki: An anthology of youth* was published (1983).

Posthumously (1987), *Garden of Friends* was published, which was about

the garden Douglas created with his wife artist Margaret Coen.

Although most of his working life was outside of New Zealand he did spend some time in the UK and was the editor for the Stratford Evening Post for a while.

Douglas received many honours including the OBE (1960), Officer of the Order

of Australia (AO, 1979), the Sydney Myer Award for the best poetry of the year, the Grace Leven Prize for Poetry for his *Collected Poems 1936-1967* and the Britannica-Australia award in Humanity. He was also a member of the Commonwealth Literary Fund, 1955-1970.

ELTHAM
BUILDING SUPPLIES

Cabinet Making, Glass Supplies & Custom Joinery Solutions

Donald & Ian Murray

06 764 8616 027 242 8379
027 348 9445

136 High Street, Eltham
eltham.bs@gmail.com
www.elthambuildingsuppliers.co.nz

SCHURR IRELAND
CHARTERED ACCOUNTANTS

NEW PLYMOUTH ELTHAM
p. 06 759 0105 p. 06 764 8305

www.schurrireland.co.nz

I’m Prepared....
For My Whanau



SOUTH TARANAKI FUNERAL SERVICES

Ph: 06 2788 088

Funeral Directors ASSOCIATION OF NZ MEMBER

Gardening with Palmers Gardening Centre



Camellias

Evergreen, flowering, fragrant. The Camellia has much to offer. In many Taranaki gardens, camellias are already starting to flower. A gorgeous splash of colour among elegant lush foliage. Camellia *sasanqua* varieties are fast growing, tolerate sun or shade and are prolific flowerers from early autumn until late winter. Their upright habit and smaller leaves and flowers make for an excellent hedge.

Camellia *japonica* tend to have larger flowers

and leaves, more varied flower form and colour-range and are well-suited as a specimen tree in your garden. Looking after your camellias is straightforward. All camellias prefer free-draining soil that is slightly acidic with loads of organic matter. Compost and sheep/chicken manure will do the trick. Here at Palmers, we stock a range of acidic fertilisers. During summer, water young camellias frequently and don’t let the soil dry out, especially if yours is a coastal garden. And yes,



camellias are quite happy by the coast.

Favourites at Palmers, in-store now, are *Royal Velvet*, a strong growing tree with large, deep red flowers. Another camellia with deep red flowers is *Yuletide* - a smaller *sasanqua*. Less common is *japonica Guilio Nuccio*, a large, vigorous, early flowering camellia with striking coral-pink blooms. For hedging, you can’t go past *Camellia Setsugeka* with its upright form, glossy foliage and delicate white flowers. *Koto-no-kaori* is our pick of the fragrant camellia with simple, sweet pink flowers. All these varieties will attract birds to your garden.

Here in Taranaki, with our temperate climate, we can plant camellias at any time. Right now, though - the beginning of winter is ideal as the ground is cooler

with plenty of moisture. Camellia. Easy-care and hard to beat for winter colour. Plant now.

Palmers knows plants

At Palmers, you’ll find a Garden Centre full of passionate gardeners who are ready to share the joy of good living with you. We are all about creating beautiful spaces, at our place and at yours. We’re locally owned and operated, packed with quality products and expert advice for your home and garden.

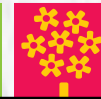


CAFÉ BOTANNIX

The ideal setting to stop in for a delicious meal, made in-house with seasonal garden produce. Our tranquil garden setting and covered outdoor courtyard is the perfect place to relax after meandering through the garden centre.



Cnr Katere and Devon Rd, Fitzroy, New Plymouth.
Ph: 06 758 7455. Open 7 days from 8.30am.



Palmers



Camellia Koto no Kaori.

Midwife Sharon Robinson now based in Opunake

Sharon and her husband Dave Rohe have recently shifted to Opunake. Sharon is a midwife and was based in Stratford from 2003-2015. They have spent the last seven years traveling and Sharon has been working in different areas of New Zealand including Auckland, Kaitaia, Tauranga and Golden Bay.



Sharon's first mother and baby (since returning to Taranaki) was born last week at Taranaki Base Hospital. The student midwife who was helping, had Sharon as her midwife when Sharon lived in Stratford. "It was so wonderful to be supporting a student who had three of her own babies with me."

positive birthing experiences usually happen when birth occurs the ways that Mother Nature designed, naturally. She has done a lot of work supporting women who have had previous traumatic births and she says that all of those traumatic births occurred in hospitals. She is a strong advocate for homebirth and says, "The hospital is where you go when there are complications." She also says, "Research shows that outcomes for low risk mothers and babies birthing at home vs in hospitals are comparable. What is different is that women birthing at home experience far fewer medical interventions and they end up feeling much more positive about their birthing experiences."

Sharon is setting up a clinic at her house at 74 Domett St. She is on: Find Your Midwife and she also has a YouTube channel: Sharon Robinson Midwife.

Her cell # is: 0272515373 if you want to touch base to see if you are a good "fit" for her services.

Sharon trained as a midwife at State University of New York and did all of her clinical training in two big city hospitals in the Bronx. She has lived overseas and traveled extensively helping birthing women in various countries including Tonga, Cambodia, Benin West Africa, Mexico and even the Amazon Jungle in Peru. She has been a midwife for over 20 years and has a passion for supporting women to birth in ways that lead to healthy outcomes for mothers and babies and leave the mother feeling positive about her birthing experience. She says that

POWERLINE FAULTS AND SERVICING

From a fuse or broken insulator replaced to a complete powerline rebuild

Call: **TOP OF THE LINE ELECTRICITY SERVICES**

Greg Lewis: 027 453 0326
Justin Robinson: 027 445 9162

Powerline Servicing Specialists
Free line inspections
Free advice | Free quotes



Walco



15% OFF ALL WALCO PRODUCTS

WEED WIPERS, 3 POINT LINKAGE ATV SPREADERS



New Plymouth

Hawera

Branch: 06 758 2274

06 278 5119

Paul: 027 498 7277

Raymond: 027 444 8861

TransAgCentre
AGRICULTURE



Budget misses key players at Stroke Foundation

The Stroke Foundation of New Zealand says that Budget 2022 offers very little support to the hundreds of health-related NGOs struggling to provide services to people "falling through the cracks" within the New Zealand Health System.

The funding of \$102 million which has been set aside for community healthcare, makes up a mere 0.9% of the record \$11.1 billion funding announced for the health sector in Aotearoa and fails

to recognise how health-related NGOs currently subsidise the health system to the tune of \$2 billion per annum.

"\$102 million for community healthcare services still means there is gross underfunding of services provided by the NGO sector," said Jo Lambert, Chief Executive of the Stroke Foundation.

With over 9,500 strokes experienced in Aotearoa every year, the brain-related disease is the single biggest cause of serious adult

disability in the nation.

"Stroke is a devastating condition that affects the lives of thousands of New Zealanders. As Aotearoa's only national charity focused on preventing strokes, improving outcomes, and saving lives after stroke, the Foundation is currently fighting a growing tidal wave of strokes, with very little support for our mahi," says Jo.

The wealth management firm, JBWere, in their report titled "The New Zealand Cause Report", shed a stark

light on the difficulties faced by health-based charities and NGOs operating in Aotearoa.

One in five health-based charities has experienced a more than 50% drop in their revenue in 2021, following the pandemic-induced recession, despite increased demand for services. Half of all health-based charities experienced a drop in revenue greater than 20%.

The 'State of the Sector' survey by ComVoices states that post-pandemic, 80% of all charities were battling increasing demand for services.

The Stroke Foundation welcomed the positive developments arising from the record health funding proposed, highlighting the emphasis on health outcomes for Māori, the intent to improve collaboration within the health system, and the removal of barriers to health equity such as the "postcode lottery."

The shift to focussing on better, earlier care, the Foundation said, is an opportunity to recognise the critical role played by community health services in relieving the pressure on the health system.

The Stroke Foundation reiterated the need for the Health System to partner with health-based NGOs to deliver positive outcomes for all people in Aotearoa.

\$8,490
EX GST RIDE AWAY

GEORGE 520 EPS



FEATURES

- 38 hp, 495cc single cylinder, liquid cooled, Bosch EFI, 4 stroke engine
- CVTech transmission with engine braking
- Selectable 2WD/4WD
- Push button locking front differential
- Electronic power steering (EPS)
- Hydraulic disc brakes
- Front and rear dual A-Arm independent suspension
- 2500lb winch
- 12 inch alloy wheels
- 25 inch 6ply CST Tyres
- Steel front and rear carrier racks
- Handguards
- 350kg low capacity
- 35kg front / 70kg rear carrier rack capacity
- Tow package, indicators, horn and mirrors as standard
- 2 Year Warranty
- Available in Red

CFORCE 520 EPS is the ideal ATV for the farm, with more power and more features. Out in the paddock you will love the extra power of the 500cc engine, electronic power steering (EPS), 12 inch alloy wheels with larger 25 inch 6 ply INNOVA tyres and a winch. Bigger power and great value features makes this ATV a true all rounder.



CFMOTO

06 765 7712

333 Broadway, Stratford



Have you ever considered a homebirth?



Sharon Robinson is an experienced homebirth midwife and has recently relocated to Opunake. Happy to assist with hospital births when necessary.



CLINIC: 74 DOMETT ST, OPUNAKE ☼ CELL # 0272515373

EMAIL: SHARONROBINSONMIDWIFE@GMAIL.COM

CAN FIND HER ON: FIND YOUR MIDWIFE

YOUTUBE SITE: SHARON ROBINSON MIDWIFE

Paddy Bolger reflecting on 45 years in real estate

Paddy Bolger who has spent around 45 years in real estate and is still selling houses and farms, reflects on the changes he has seen in the industry over the years.

With his wife Anna, who also joined her husband selling real estate for a short time, it was a pleasant couple of hours over a cup of coffee at Manou's Café and Restaurant in Breakwater Road with the affable couple who originally came from Rāhotu. Anna used to play piano and piano accordion in The Rāhotu Band but that's another story.

Paddy grew up on a dairy farm and began his working life as a dairy farmer before switching to real estate.

Paddy started in real estate working for a farm supply company called Hodder & Tolley at 316 Devon Street East which also had a real estate arm. "Much like Property Brokers but not as big, it operated in the lower half of the North Island," says Paddy who still recalls his first day when he arrived at 8am sharp.

"I thought town people worked from 8am to 5pm," said Paddy with a chuckle. It earned him his first rebuke from the boss who directed: "Bolger, you are not milking cows now (we had some 5am starts then), real estate is a professional business and professional people start at 9am. I got the message."

Continues Paddy, things were very different then. "As long as you had a clean police record you could start selling. You didn't need any qualifications. Also, we were real estate salespeople not licenced salespeople and the agent who had a real estate licence could only employ a maximum of three other people, not twenty or more as happens these days."

On his first job there was only he and the Branch manager.

Interestingly, continues Paddy, "At that time there was approximately 42 salespeople in New Plymouth selling houses and they sold approximately 100 houses a month, roughly the same sold today with around 115 salespeople." He continues: "The average



Paddy Bolger.

house then sold for \$20,000 with a commission base fee of \$300 plus 2.5% of the sale price (there was no gst then) which meant a commission of \$800 in total on the average house sale."

Of course things were also different then without today's technology. There were no cell phones, no fax machines, no printers or copiers, and no computers - agreements were all done on a typewriter. Also there were no sole or exclusive agencies except for the odd auction.

People were also not allowed to work on Sundays - it was illegal.

Nor were there open homes/farms, that came later, says Paddy.

Instead, we drove clients around to view properties, says Paddy. Photos were not yet used. There was also no paid for advertising.

Paperwork was also kept to a minimum. "We had an A5 single page with basic information," said Paddy. Today some transactions have up to six A4 pages - everything is getting more complicated.

Paddy eventually left Hodder & Tolley in 1982 and, with three mates, established Brodie Real Estate. As the four were all unlicensed, they found a licensed estate agent, a Mr

Brodie and paid him \$100 a week to operate under his licence, said Paddy. He was never actually in the office though. Whenever anyone asked to talk to see him we'd say he'd gone out for a bit says Paddy. "We shared all costs and income and had a

sales meeting every day." He remembers this period fondly as "the best time ever in my career." Unfortunately Mr Brodie died suddenly "so we had to temporarily close till we found another guy with a licence".

They managed to arrange a meeting with the licensing Board and, "all dressed up in our best suits", drove to Auckland. There was a bit of a delay while we gained licensing approval under our new name and were soon up and running under the banner Devon Real Estate Group operating out of their old address at 142 Devon Street East. Sales grew. He recalls they did 61 sales in March '89 and he sold 26 farms that year and 41 properties.

When they first opened Brodie Real Estate office at 142 Devon Street East, you couldn't find an empty office building in the town "so we had to convince a butcher to retire", recalls Paddy reflecting its a bit different today with a number of empty shops in New Plymouth's main street.

It was not long after establishing the Devon Real

Estate Group, they were approached to help set up the First National real estate name in New Zealand so they became Devon First National Limited.

"By that time we had grown to five partners after taking over two other real estate offices and moved next door to a bigger office," says Paddy.

One of our partners had a Real Estate Agents Licence and was subsequently approached by Harcourts who wanted to buy them out. It was put to the vote and though two of the partners - Paddy and Dave - were against it, the other three supported the sale.

"Harcourts made me work for them for a year to keep the rural sales going," said Paddy. Devon First National had by then opened a branch in Centre City at Shop 29. "It was a great location. So with 6 other people I worked from there for Harcourts," said Paddy. Harcourts however decided to close the Centre City branch.

"I couldn't believe it when Harcourts closed the branch after a year, said

Paddy. He and his mate Dave Connolly along with another guy who had a real estate licence, in 1990, ended up establishing a new real estate office, Westcity Realty, at 86 Devon Street East.

Paddy recalls that at the time people thought he was crazy when real estate was slow and hard to get in 1990," said Paddy adding that the share market crash was still working through all businesses at that time. After their first meeting a decision was agreed that no one was allowed back in the building till they had a listing. "They all achieved that in less than a week," said Paddy. It was not long after that "Dave bailed me up one morning to say we need to get our agent licences." The pair went on to sit 6 papers over two years to become fully licenced estate agents.

In 1997 Paddy went off to Auckland for three years selling real estate which he described as "a great experience". He returned

Continued on page 14

Sinclair Electrical

are your heat pump specialists

Call today for exceptional service and a warmer home this winter!









SINCLAIR ELECTRICAL & REFRIGERATION
31 Tasman Street, Opunake
Phone: 06 761 8084

Peter Kuriger Engineering & Concrete

We Repair Farm and Contracting Machinery - Hydraulic Rams Diggers and all Buckets - Tip Trailers - Quarry Equipment and undertake General Maintenance - plus Stainless Welding

Need Concrete? troughs, culvert pipes and lids, bridge decks, box culverts and bases, inspection pipes and much more....call us.

889 Upper Kaweora Road - Opunake 0274 526 718 - 06 761 8122



Paddy Bolger reflecting on 45 years in real estate

Continued from page 13

to New Plymouth in 2000 and began working for The Professionals under Steve Bear who he says he enjoyed working for.

Paddy was then approached by Farmlands to establish a real estate arm of the business in Taranaki." At the time Taranaki was the only area in New Zealand with no Farmlands real estate branch." Paddy moved into the Farmland building at Bell Block and went on to establish five branches in Taranaki. "I was just getting organised with two other people when we were told Property Brokers, a big, so called family business, had taken over Farmlands." Not long after TSB Realty salespeople joined us. Now earning less commission and with no title it was something

of a comedown for Paddy from being Branch Manager at Farmlands and for most of his real estate career, a rural manager.

Paddy has since had another change in his career and, after being approached again, is now working for Town and Country Realty.

Reflecting back he says when he started in real estate salespeople just listed and sold properties. The administration did all the paperwork. Now salespeople are expected to also do the administration work and spend their time sitting at a computer instead of being out in the field talking to people and listing.

In some ways he's gone a full circle as the administration/agreements are now done by the office staff. "I breathed a sigh of relief," he admits.

I've always said I got into real estate by accident, not choice, says Paddy.

"I have loved every minute of the job. Meeting great people, seen heaps of properties, travelled one end of the country to the other I've loved helping people achieve their dreams," concludes Paddy who insists "Buying property is the best investment around".

He ponders what real estate will be doing in the next 45 years.

Looking back he is particularly proud of action he took which has made the life of real estate agents easier and was instrumental in the Real Estate Amendment Bill.

"In 1990, the IRD ruled and won that real estate salespeople were not independent contractors but employees and were

not entitled to deduct expenses incurred as real estate salespeople," explains Paddy.

"When the National Party won in 1990 and John Armstrong won New Plymouth I approached him to take a bill to parliament to rectify this. (The REINZ and a company called Challenge Realty took the IRD to court and lost) which he did and

was passed. Real Estate salespeople were once again treated as independent contractors and entitled to deduct their reasonable expenses incurred in earning taxable income."

He reflects "I never got any thanks from the industry for my part in this."

Forty five years on Paddy with a wealth of experience is still as enthused about

selling houses and farms as when he started .

Says Paddy Bolger Licensed Real Estate agent/Broker at Town and Country, "If you are thinking of selling or want advice on buying, talk to me."

Paddy can be contacted on 027 434 4464.



ABOVE: An enchanting sunset photographed by Ian McAlpine.



MOVING?
 Subscribe to the Opunake & Coastal News and we'll post you a paper as soon as it's out!
 06 761 7016
OPUNAKE & COASTAL NEWS



TCRT

TARANAKI COMMUNITY RUGBY TRUST

Thank You!

TCRT celebrate reaching one of their goals, creating a long term future for the Trust through farm ownership!

Thanks to all of the TCRT partners who have supported us over the years, helping to secure the future of community rugby in Taranaki for generations to come.

PLATINUM COMMUNITY PARTNER

COMMUNITY PARTNERS



COMMUNITY SUPPORTERS

Anzco, A-Z Web Solutions, Bell Booth, BNZ, Brendan Attrill Agriculture Ltd, Campbell Contracting, D Jennings Ltd, Dunlop Insurance, Eco Lab, Egmont Hedge Mulching Ltd, Favour the Brave, Gopperth Contracting, Govett Quilliam, Greaves Electrical, Houghton's Pumping Heating & Gas, Hunts Farm Services 2014, Ingrams Contracting, Kalin Contracting, McFall Fuel, Norwood Farm & Machinery, Ravensdown, Seales Winslow, Spreading FBT, Stihl Shop Hawera, Taranaki Veterinary Centre, TSB Bank



William Johnston (Farm Vendor), Scott Barrett (Ambassador), Anna Boulton and Carl Wilmshurst (Contract Milkers)

WWW.TCRT.CO.NZ

Otakeho looks to next 125 years

When the Otakeho Hall was built the successful tender was for just 400 pounds. The local people had held a Monster Bazaar to raise the money and when local MP Felix McGuire opened the hall on May 18 1897 it was debt-free. In that year Queen Victoria had been on the throne for 60 years, so the hall commemorated her Diamond Jubilee.

Just over a hundred and twenty five years to the day after Felix McGuire opened the hall, the Otakeho Hall's 125th jubilee will be celebrated with a luncheon on the Sunday of Queens Birthday Weekend. This will include local speakers talking about various aspects of the hall's history.

Kelvin Putt has been involved with the hall committee for the last 40 years, the last 16 as chairperson. His father before him had served as secretary and his grandfather had been chairman in the 1920s. Last year Kelvin was made a life member along with long-serving secretary Mary Anne Whakatutu. Other life members have included Ken Tarrant, Robert Bilton and Murray McNeill



From left, Dominic Schuler, Rod Le Fleming, Kelvin Putt (Hall Committee chair), and Richard Walker looking forward to the Otakeho Hall Jubilee..

Adams who served 22 years as chairman.

Work had been done on the hall in the leadup to the jubilee and Kelvin says the committee wanted to thank the local people who had helped with fundraising for the repainting and

reroofing of the hall as well as the sponsors for their contributions.

Otakeho sheep station owner Edward Godsall had donated the section on the Auroa Road where the hall now stands. Before then social functions were held

at the local blacksmith, with a temporary floor put in so that dances could be held at night, and then removed so that the blacksmith could carry on his business the next day.

The Otakeho Hall was one of the first in South Taranaki to be lit by electricity courtesy of a generator connected to a water wheel in a nearby stream. Many of the hall's early records were lost when the Otakeho store burned down in 1928, but there were newspaper reports of regular dances and social functions being held there. The Otakeho Hall became something of a hub for the local community

and was used by local social and sporting groups. These have included the Farmers Union, the forerunner of Federated Farmers, as well as the Women's Division of Federated Farmers, the forerunner of Rural Women. It has also been used by the local Badminton and Indoor Bowls clubs and other sporting and cultural groups. At one time Presbyterian Church services were held here as well as a Sunday School. The hall also doubled as a picture theatre. Boss Whiting, the founder of Everybodys Theatre in

Opunake would park his van outside with his projector beaming on to the screen inside the hall.

A recent addition to the hall is the war memorial and flagpole commemorating those from Otakeho who did not return from serving in the two world wars. The memorial plaques from the Otakeho School were transferred and placed on the new structure in time for ANZAC Day 2018. Since then the memorial has become a focal point for local ANZAC Day and Armistice Day commemorations..



Otakeho Hall 125 years Luncheon

Sunday 5th June, 2022
At the Otakeho Hall

Join your neighbours and old friends to celebrate 125 years of the Otakeho Hall with a catered hot lunch.

Doors open from 10.30am
Luncheon 12pm

BYO drinks (coffee and tea provided)

Cost: \$35 per person

\$17.50 per child (10 and under)

Contact Rod: 027 475 8995

NZSO treats New Plymouth to six exciting concerts in June

The New Zealand Symphony Orchestra returns to Ngāmotu New Plymouth in June with one of its largest selection of performances over two days.

The NZSO, which celebrates its 75th Anniversary throughout 2022, presents six concerts over 14 and 15 June as part of Setting Up Camp, where the Orchestra engages with audiences of all ages in New Plymouth.

Along with evening performances of music by the great composers Mozart, Wagner, Dvořák and Copland, are three whānau-friendly daytime concerts.

A Relaxed Concert on 14 June is designed for audiences who may feel uncomfortable in a traditional concert environment. There is a relaxed attitude to noise

and movement during the performance, with minimal lighting effects and a 'chill out' space.

Tamariki Time on 14 June is a free concert suitable for pre-schoolers featuring a variety of short, dance-related music that the smallest members of any whānau will love. The concert will also feature an NZSO Storytime segment, with a reading of the children's story The Little Yellow Digger to original music by New Zealand composer Claire Cowan.

Side-by-Side with the NZSO, also on 14 June, will be a dream come true for Taranaki musicians, who will rehearse and learn side by side with NZSO musicians and perform under the baton of internationally renowned

conductor and NZSO Music Director Emeritus James Judd..

Pick-a-Path, on 15 June, is an exhilarating selection of uplifting music where the audience can choose during the performance what music the Orchestra will play next. Inspired by 'pick a path' story books, the concert will especially appeal to school groups and families.

One of Mozart's most beloved works Eine kleine Nachtmusik (A Little Night Music) features in a captivating evening of chamber music performed by the Orchestra on 14 June. The concert Nachtmusik, directed by NZSO Concertmaster and First Violinist Vesa-Matti Leppanen, also features Mozart's majestic Serenata notturna - written when he was just 20 - and Wagner's beautiful symphonic poem Siegfried Idyll, composed as a birthday gift for his new wife.

LAWYERS

OPUNAKE LAWYERS Thomson O'Neil & Co.

Our Opunake Office is attended by:

Robert England on Wednesday & Fridays for buying and selling houses, farms & businesses; Trusts, Wills and Estates.

Mark Utting on Thursdays for buying and selling houses, farms & businesses; Trusts, Wills, Estates and refinancing matters.

FOR ALL YOUR LEGAL REQUIREMENTS

30 TASMAN ST, OPUNAKE

PH: 761 8823



Viv Scott

027 441 4596
viv.scott@eieio.co.nz



Tara Gibson

027 766 4456
tara.gibson@eieio.co.nz

Your Local Team
in Real Estate

www.eieio.co.nz



67 Breakwater Rd (up Norma's Way) • NEW PLYMOUTH • PHONE 06 751 5065
FAX: 06 751 5085 • WWW.NEWTONGORDGE.CO.NZ

ALL DOMESTIC & COMMERCIAL JOINERY



• Kitchens • Stairways • Vanities • Lounge Units • Bench Tops • And More

Kiwi American Fusion at home on the coast

When COVID-19 killed Harbuck and Scott Harbuck their travel business Ricci switched to food instead.



Nicci Harbuck (right) with Lene Croucamp of The Coastal Greengrocer.

Last week Ricci of Food Hugger Gourmet was at the Coastal Greengrocer in Opunake showing off her array of apple butters, chutneys and American BBQ rubs.

She and Scott shifted to New Zealand from the United States 10 years ago, and the samples on offer reflected the different regions of that country.

"This is from Memphis,

this is Tex Mex, and this is found in Portland or Seattle," she says, indicating different bottles at the ready. "We call it Kiwi-American fusion."

They do everything themselves, right down to the design of the labels, which are designed by Scott. "We try to have a point of difference in each of our labels," says Ricci.

The flavours are natural. Many of their products

are worked out through a process of trial and error. Ricci says Scott, who works at Fonterra often has his workmates sample various versions of products they are working on. Ricci says they are the only business in New Zealand who can offer brown mustard.

For 12 years she and Scott had run their own travel business which helped people design their own

holidays. These included giving somebody who was interested in photography a chance to take pictures of grizzly bears.

"We found a Russian tank driving school for one gentleman," says Ricci.

Then COVID came and the bottom fell out of the tourism market so they had to look elsewhere.

"Food was our second love, so this is what we are doing," says Ricci. "We don't see travel ever getting back to what it was, but when one door closes, another one opens."

They started Food Hugger Gourmet in September and have featured at the Stratford and Pihama markets and the Taste of Taranaki Pop-Up in Eltham. In July they will be off to the Auckland Food Show with Venture Taranaki.

"We've doubled our business month to month since we started," says Ricci. Lene Croucamp of the Greengrocer saw Ricci at the Pihama Markets and invited her to show off her wares at her business in Opunake.

Last Thursday interest in Ricci's products appeared to be high.

"Sales have been brisk this morning," says Ricci. "Everyone has tried something."

"We teach people how to have fun with food, especially when food is so expensive. There's no wrong way to use our products."

Food Hugger Gourmet products are on sale at The Coastal Greengrocer.



**CARRFIELDS LIVESTOCK
SERVICING THE COAST**

CONTACT OUR TARANAKI TEAM:

**Brent Espin 027 551 3660 or
Daniel Hornby 027 636 2090
SOUTH TARANAKI**

**Daniel Crowley 027 215 3609
COASTAL/NORTH TARANAKI**

**Tim Hurley 027 414 6756
COASTAL TARANAKI**

**Colin Dent 027 646 8908
CENTRAL TARANAKI**

**Neko McDonald 027 429 8674
NORTH/CENTRAL TARANAKI**



*Stockists of a variety
of organic foods,
free range eggs and
Taranaki Honey*

Ph 027 900 2533

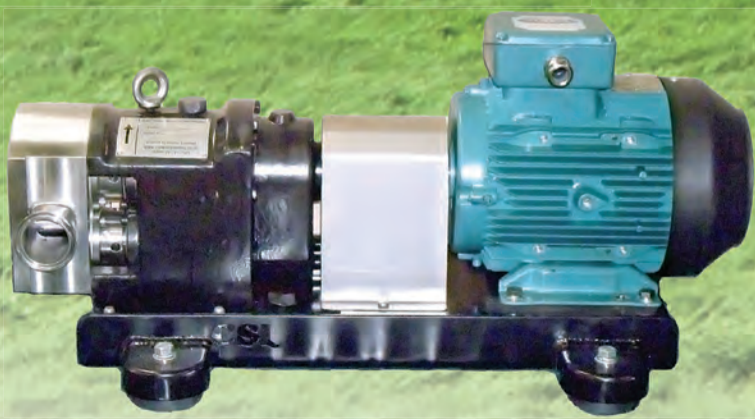


Lower Milk Solids Damage Improve Milk Cooling



MILKFLOW

The CSL Milkflow Milk Pump Controller improves returns by reducing milk solids damage and optimising primary cooling.



ROTARY LOBE PUMP

Combined with the CSL Milkflow Controller, the CSL Lobe pump accommodates the large wash volumes required in today's dairy sheds without compromising milk quality.



Contact us
0800 10 7006
www.corkillsystems.co.nz

Tuia Taitonga ki Tai

Southlink Coastal



He karere tā te Kaunihera o Taranaki ki te Tonga News from the South Taranaki District Council

Welcome to this special quarterly edition of Southlink for Ōpunakē and Coastal News readers.

Grease
Rawhitiroa Domain
Friday 10 June, 5.30pm or 7.30pm

Herbie: Fully Loaded
Ōpunakē
Sunday 12 June, 5pm or 7pm

Drive In Movie Night

\$10
per vehicle per screening

Tickets on sale now!
Tickets are limited to 50 per screening, so get yours now from South Taranaki i-SITE Visitor Centre in Hāwera or from the Ōpunakē LibraryPlus.

Drive In at Ōpunakē

Take a trip down memory lane and come along to South Taranaki District Council's **Drive In Movie Nights**.

Grease is being shown at Rāwhitiroa Domain in Eltham on Friday 10 June (5.30pm or 7.30pm session) and *Herbie: Fully Loaded* in Ōpunakē on Sunday 12 June (5pm or 7pm session).

Get the family together, bring along some snacks and drinks (or buy some there) and wrap up warm to watch movies on the big screen in the comfort of your car. Tickets are \$10 per vehicle per screening and there is a limit of 50 cars per session, so get your tickets now from South Taranaki i-SITE Visitor Centre or the Ōpunakē and Eltham LibraryPlus.

The Great Comedy Show

The Great Comedy Night, annually hosted by local lad and nationally renowned comedian Ben Hurley, is heading to Eltham Town Hall on Friday 15 July and to Hāwera's TSB Hub on Saturday 16 July.

Hurley, best known for his TV appearances on shows such as 7 Days and The Project, is bringing Dai Henwood, David Correos and Liv McKenzie.

Tickets are \$40 each or table of 10 for \$350 and are now on sale at the South Taranaki i-SITE Visitor Centre and Eltham LibraryPlus. Both shows start at 7:30pm with doors open from 7pm. The show is R16. Get in quick - this show is usually a sell out.



Dog Registration Due

Dog Registration is now due.

If your dog is over the age of three months, it needs to be registered and microchipped - simply pop into the Hāwera Administration Building or your local LibraryPlus to get this done. If you are re-registering a dog, look out for your renewal form in your letterbox over the next couple of weeks.

Take advantage of early bird rates by paying in full by 31 July 2022. After this date, registration fees increase by 50%.

You can pay online at www.southtaranaki.com/pay-online.

Puanga Events

The South Taranaki District Council is pleased to bring you:

"The Rise of Puanga" speaker Maata Wharehoka will talk to you about the Rise of Puanga and Parihaka at the Ōpunakē LibraryPlus on Monday 27 June, 11-12.30pm.

"Celebrating Puanga" speaker Puhī Nuku will talk to you about celebrating Puanga and Puanga Traditions at the Manaia LibraryPlus on Wednesday 29 June, 10.15am-11.30am.

Both events are followed by a light morning tea. You must register to attend, please RSVP by email to fran.levings@stdc.govt.nz by 20 June.

Long weekend open hours and rubbish and recycling

As we head into a long weekend, we'd just like to remind residents that our Hāwera Administration Building and LibraryPlus centres are closed on Monday. Our rubbish and recycling kerbside pick up remains the same - so please put your bins out as normal. Have a happy long weekend and please travel safe if you're on the road.

Register now for free writing workshops

LYSAGHT WATT TRUST RONALD HUGH MORRIESON LITERARY AWARDS

FREE JUDGES WRITING + POETRY WORKSHOPS

POETRY WITH ROBERT SULLIVAN
THUR 16 JUNE, 5.30PM
HAWERA LIBRARYPLUS

SHORT STORY WITH AIRINI BEAUTRAIS
SAT 18 JUNE, 10AM
TSB HUB, HAWERA

COMPETITION OPENS WED 15 JUNE 2022

FOR MORE INFORMATION VISIT SOUTHARANAKI.COM/RHM

Registrations are now open for the 2022 Lysaght-Watt Ronald Hugh Morrieson Literary Awards.

Each year, we kick off the Awards with free writing workshops facilitated by the Judges so writers can get a feel for what they will be looking for.

This year's Short Story section Judge is **Airini Beautrais**, **Robert Sullivan** is the Poetry Judge and Taranaki Daily News editor Matt Rilkooff is judging the True Story section (previously known as the research section).

The competition officially opens on Wednesday 15 June and coincides with the Writing Workshops.

Poetry Workshop with Robert Sullivan
Hāwera LibraryPlus, Thursday 16 June, 5.30pm

Short Story Workshop with Airini Beautrais
TSB Hub, Saturday 18 June, 10am.

To register for one or both of these workshops, call 0800 111 323 or email entries@stdc.govt.nz.

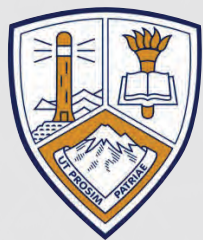
Ōpunakē Beach Retaining Wall complete



The new \$130,000 retaining wall at Ōpunakē Beach has been completed by local contractors Excavat.

www.southtaranaki.com

0800 111 323



Opunakē High School

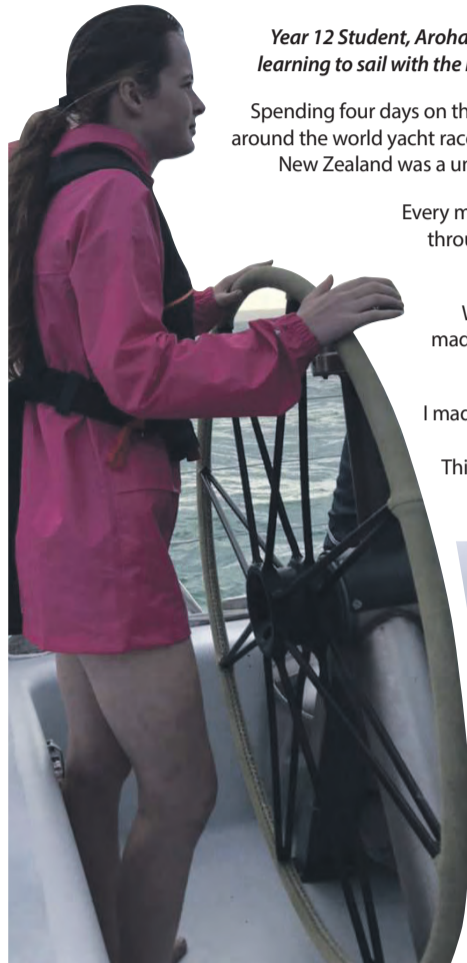
Te Kura Tuarua o Opunakē

CONTACT DETAILS

P: 06 761 8723
 Tasman Street, Opunakē 4616
 PO Box 4, Opunakē 4645
 www.opunake.school.nz
 admin@opunake.school.nz

GROWING GOOD PEOPLE FOR A RAPIDLY CHANGING WORLD | HE WAIHANGATANGA O TE TANGATA PAI I ROTO I TÉNEI AO HURIHURI

FOUR DAYS ON A KIWI BOAT



Year 12 Student, Aroha Turnbull was granted an opportunity to spend some time learning to sail with the New Zealand Sailing Trust. Here is her account of the time:

Spending four days on the Lion New Zealand (1985/85 New Zealand entry into the around the world yacht race of the era) with 15 other students from different parts of New Zealand was a unique experience and completely out of my comfort zone.

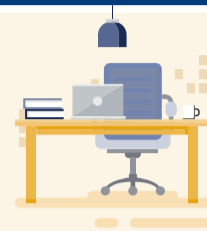
Every morning after been woken up from the crew playing music through the speakers, we all jumped into the water to prepare ourselves for the activity's planned for the day.

We explored different islands around the Hauraki Gulf and made it across to the Coromandel before having to do a night sail due to battery problems.

I made so many memories from this trip and meet people who are now considered my closet friends. This experience was new experience for me and I hope to be able to do another trip in the future like this.



Principal's Address



E huri tō aroaro ki te rā, tukuna tō atārangi ki muri i a koe.
 Turn and face the sun and let your shadow fall behind you.

With this whakatauki (Maori proverb) in mind, we continue to navigate the challenges created by this ongoing pandemic. Some blended learning has been taking place at our kura, and this has been enabled by the constant upskilling and professional development of our staff. This hybrid learning platform allows students to access all their learning online, as well as in the classroom. We can therefore support akōnga who have had to isolate for long periods of time.



Our Prefects hosted a wonderful leadership hui (meeting) for our feeder Primary Schools (image above). The day involved team activities, challenges, quizzing on leadership, and a mega game of basketball. It was wonderful to have our Opunake High School Prefects work with the next generation of kaiako (leaders) on the coast. And the pink High School tie was a great addition to our uniform, also a fun way to celebrate Pink Shirt Day.

The Tiny Homes project has expanded into Graphics with Abby Clark and Saffron Kerr Slater designing the layout of the build. This is real life teaching and learning at its best.

The eBike won by our Evolocity team: Josh Kruger and Himiona Tamakaha has been put together. Another example of hands on learning. Boy can that bike fly!!!



After a grueling 6 hour adventure race in Rotorua, our mixed Hillary Challenge team just missed out from qualifying for the North Island Adventure Race finals. However, gaining 8th place for such a new team was very impressive. A big thank you to Mr Matt Lash for coaching this go-getting, resilient, uber fit team.

We will be having our Individual Development Plan interviews with akōnga (learners) and their mentors this week. From there interviews with curriculum teachers will be organised. This will ensure students gain the specific, subject area feedback they need to support them with their learning journey.

A huge thank you in advance to all of you who will be coming along to support our Bingo night, and to all of the local businesses who have supported us with their incredibly generous donations.

Naku te rourou nau te rourou ka ora ai te iwi
 With your basket and my basket the people will live

Kia kaha, kia maia, kia manawanui

Andrea Hooper Carr
 Principal

OPUNAKE HIGH SCHOOL

7
9

BINGO NIGHT

SATURDAY 11TH JUNE
BINGO, BAR & AUCTIONS

TICKETS	\$20	INCL 6 GAMES	79
11	4	42	7PM START
22	79	★	R16
NIBBLES & SUPPER PROVIDED	45	SPOT PRIZES	30
23	OPUNAKE HIGH SCHOOL HALL		

Opunake High School
Te Kura Tuarua o Opunake

Government comes to party on R&D

DairyNZ says the Government's R&D commitment of \$339m to reduce agricultural greenhouse gas emissions will help Kiwi dairy farmers remain high-performing.

The Government funding includes the establishment of the new Centre for Climate Action on Agricultural Emissions.

"Additional funding and the new Centre will add to the significant investment already being made by the sector into R&D – so, collectively, it will accelerate the development of technology and tools to really drive further emissions reductions by the ag sector," says DairyNZ chief executive Dr Tim



Dr Tim Mackle.

Mackle.

"Because Kiwi dairy farmers are already so efficient, there's no silver

bullet. We need new high-impact technologies and to accelerate their uptake to continue reducing our

environmental footprint, while enabling farmers to run successful businesses."

DairyNZ has worked consistently with the Government to ensure they understand the scale of the climate change challenge affecting farmers, and the opportunity to remain world-leading sustainable dairy producers.

"DairyNZ has advocated strongly for Government to invest significantly more in supporting the sector to play its part to address climate change. So it's great to see our work on behalf of farmers coming to fruition," says Dr Mackle.

The announcement is a step in the right direction to accelerate the development

of new technology needed on-farm as soon as possible, and support farmers to adopt these tools.

"We'll continue to advocate for how this R&D funding is invested, as new solutions develop. This will bring the best outcomes for farmers and New Zealand into the future," said Dr Mackle.

Kiwi dairy farmers already have the world's lowest carbon footprint for on-farm milk production and want to retain that competitive advantage – to continue contributing for their families, the economy and local communities.

"We already have a world-leading position with low carbon dairy and a world-first emissions reduction plan in He Waka Eke Noa. This

new increased investment will help dairy improve our position even further."

The dairy sector, including DairyNZ, is investing in a range of research into new solutions, including methane inhibitors and low methane feeds. The sector is working together on ways to adapt overseas technology solutions to New Zealand farming systems.

"The sooner we get new technology for farmers, the sooner we will meet our goals," said Dr Mackle.

"It's great to see the Government signalling all sectors need to play their part – including agriculture, transport and energy. All Kiwis have a role in this, including rural areas, towns and cities."

Farm wetland guidance welcomed

Fish & Game welcomes the new NIWA-DairyNZ resource to help farmers with wetland design and performance.

"New Zealanders are becoming far more aware of the important role wetlands play in 'taking care of water,' from recharging groundwater and augmenting flows, and filtering runoff pollution," New Zealand Fish and Game Council Chair Ray Grubb

says.

"Wetlands are vital for wildlife because they provide valuable habitat for both native and valued introduced species. Healthy wetlands are also crucial in helping to minimise the impact of weather events like floods and droughts, which too many New Zealand communities are unfortunately all too familiar with.

"Fish & Game, and game

bird hunters, are proud to have played a leading role in wetland protection and conservation – managing and creating numerous wetlands in many parts of the country. That is why Fish & Game has worked with DairyNZ in developing this guidance."

The new guidelines highlight that as wetlands increase from one to five per cent of a catchment area:

- sediment removal typically increases from

50 to 90 per cent, - nitrogen removal increases from 25 to 52 per cent in warmer zones of New Zealand, - nitrogen removal increases from 18 to 38 per cent in cooler zones of New Zealand, and phosphorus removal increases from 25 to 48 per cent.

The guidance is supported by twelve regional councils, Fish & Game NZ and the Waikato River Authority.

NZ FARMERS LIVESTOCK

For all your
Livestock requirements
Servicing the Coast

Contact

Bryan Goodin - 027 531 8511

Sheldon Keech - 027 222 7920



Selovin™
Prolaject™
Face-Guard™
Coppermax™
Flexidine™

Coppermax™ and Flexidine™ are Restricted Veterinary Medicines (RVM).
No: A004943, A007789, A007790, A007791, A009469, A007866.
Only available under veterinary authorisation.

Face-Guard™, Prolaject™ and Selovin™ are registered under the ACVM Act 1997.
No: A009773, A010198, A010744, A005850, A006170, A006536, A006903, A006139, A009509.

Face-Guard, Coppermax, Prolaject, Flexidine and Selovin, Elanco and the diagonal bar logo are trademarks of Elanco or its affiliates. Elanco New Zealand, 106 Wiri Station Road, Manukau, Auckland 2104.
www.elanco.com | 0800 446 121. © 2022 Elanco. PM-NZ-22-0110



For more information
visit www.selovin.co.nz or scan
the QR code to find out more.

Records set by Oeo jerseys

Two years after achieving a record price for a Jersey calf, Oeo Jersey breeders Rob and Alison Thwaites have followed this up with a record price for an in-calf heifer.

At the Jersey New Zealand 29th annual Jersey Pride sale held last month as part of the Jersey New Zealand 120th annual conference Glanton Punch Bria ET sold for \$23,600. This was a New Zealand record price for an in-calf heifer. Proceeds

were donated to charity.

“The bidding was going up at a hundred dollars a time,” says Rob. “It was definitely helped by a good payout this year.”

This year’s record price for an in-calf heifer comes two years after a calf from the same cow family was sold to a South Island buyer for \$14,200 a New Zealand record for a Jersey calf.

Bria’s three year-old dam Glanton Triple Baxter had been flushed as a yearling,

resulting in two daughters and two sons, with both sons sold for sire proving.

This family enjoyed other success at the conference which was held in Palmerston North.. At this year’s conference the Jersey NZ Hall of Fame was set up, with any Jersey cow in the last 120 years eligible to be nominated.. After nominations had been whittled down to six, Bria’s great grand dam Glanton Mans Blanche, who had



Record setting Jersey in-calf heifer Glanton Punch Bria ET.

been born in 2005 was one of the first two cows to be inducted. For Rob and Alison it came as something of a surprise.

“We were quite excited when our cow was one of the six finalists,” says Rob.

Forty straws of semen from Glanton S.S.Bastille

a grandson of Bria sold for between \$260 and \$310 per straw, also a sale record.

HIRE THE LORD OF THE TREE RINGS



TARANAKI'S LARGEST MOBILE LOG SPLITTER!

Splits more than 50 cu/m in 8 hours just about anywhere on your farm.

Lifts and splits massive rounds straight onto your trailer.

\$200 per hour + GST including operator.

FOR MORE INFO, CALL JOE GOODIN
TEL: 027 688 5372



SPRAY EQUIP™

Quality Sprayers since 1999

ARE YOU READY FOR CALVING?

Sprayequip can help take control of your calf milk pump requirements.



Only
\$3999
+GST

SPRAYEQUIP CALF MILK TRAILER – 550LTR

- 10mtr Dispensing Hose
- 550ltr Tank
- Honda Powered 2” Pump
- Painted Duragalv frame
- Turf Tyres
- Heavy duty mud guards
- NZ made

CONTACT US : 06 281 4793

FIND OUT MORE AT [SPRAYEQUIP.CO.NZ](http://sprayequip.co.nz)

Dave's keeping the cows happy

There's not a 'Moo' to be heard on David Smith's farm in Coastal Taranaki...but it's not from a lack of cows, they're just waiting for a pat before leaving the cow shed to graze more of that green green grass.

Dave's herd of 200 jersey cows get milked twice a day, and he also has a bull rearing block – all managed on his own, so he's proactive when it comes to investing in efficiencies.

When it comes to effluent management, Dave was already set up with a concrete lined effluent pond with electric stirrer, and he'd pump out to travelling



irrigators.

"I test every paddock on the farm and apply the base fert required for each paddock. From there it's just about maintaining the soil nutrient levels to ensure sustained growth through the season."

He's very careful with his fertiliser spend, and with the rising cost of synthetic fertiliser and the need to spread effluent over the entire farm, Dave could see the benefit of investing in a

slurry tanker.

"I was originally looking at the 8,000L, but then the 10,000L became available. Moving to the next size up would mean every fourth load is free, and the new 115HP tractor could handle it, so it was more efficient to go for the bigger size."

Now Dave's looking forward to spreading those free nutrients over the entire farm and cutting back on the synthetics!

Nevada

Left: David Smith at home on the farm.

Busting three common myths on pasture diversity

Busting three common myths on pasture diversity

Supported by the regenerative movement, pasture diversification is having its moment in the sun as farmers begin to recognise the value of varied grass species for soil, and animal health and performance. But as the net becomes wider, educational holes can begin to form as information is passed from one source to another. While well-meaning, some statements don't quite ring true.

Myth #1: Diversifying your pastures will mean your stock will have all the nutrients they need and automatically be healthier.

The theory: Having a variety of different pasture species (grasses, herbs/forbes, legumes) means that some species will concentrate minerals that are low in the soil.

The reality: While this theory is true, there are couple of additional supporting facts to consider here.

- How low is the soil level of the nutrient in question?

- Is the plant going to accumulate enough to meet the animal's needs? For example, low selenium soils show an increase in the iodine and selenium status of the sward but it is very minor (0.02 ppm vs <0.02 ppm in the case of selenium) and does not come close to meeting the requirements of grazing livestock.

At 5th Biz Agri, we've



Heifers grazing.

found that the only way to really know if your animals are getting what they need for optimal performance is regular herbage testing and dietary analysis.

Myth #2: A diversity of plant species means stock will self-medicate.

The theory: If given the opportunity, animals will self-medicate to provide themselves with the required nutrition.

The reality: The ability of animals to self-medicate is based on how they feel after eating a particular plant and/or learnt behaviours. If a plant provides a nutrient they are deficient in, then

the animal will associate the flavour of that plant with a benefit to the body (ie. they will no longer feel sick) — so the preference for this compound will increase. So technically there is the potential for animals to avoid a mineral deficiency given the option.

However, many herds/flocks are operating in the insufficient zone rather than at a clinical deficiency, so they will not "feel" sick, but are not performing as well as they should be. Without feedback to drive a correction, the marginal mineral status may be impacting negatively on

reproduction and production.

Myth #3: Diverse pastures are a silver bullet.

The theory: Species diversity will fix your animal health issues

The reality: It pays more to think of diverse pastures as insurance, rather than a fix-it-all strategy. With higher potential for improved mineral content and benefits from secondary plant compounds (e.g anthelmintic properties), pasture diversity

will help support your animals and may reduce the need for as many inputs. It's just important to understand exactly by how much. This is where regular herbage testing and interpretation drops in to help.

Diverse pastures are a very useful tool in the regenerative toolbox and are to be encouraged. It's just important to make sure you have all the data to back up your transition

from conventional to diverse pastures to maximise animal health and performance gains.

At 5th Biz Agri we can help you monitor and manage this transition through regular herbage testing and dietary analysis to ensure you're getting the most of your multispecies pasture.

Emily House and Nina Poletti

5th Business Agri.

Is your Dry Cow mineral supplementation up to the mark?



DietDecoder
Advancing Animal Wellness

Take the guessing out and have more confidence in your product choices

0800 765 854
www.dietdecoder.nz

NZ's Leading Dairy Effluent Management Specialists



Sustainable Effluent Management

nevadagroup.co.nz | 0800 464 393

Standout performers recognised at Taranaki Cricket prizegiving

The stars of the Good Home Taranaki Cricket's 2021/22 season were honoured at the Taranaki Cricket Association's annual premier and representative prizegiving.

Top honours on the evening went to:

Les Jones Cup (men's batting): Sebastian Lauderdale-Smith.

Parkinson Memorial Trophy (men's bowling): Ryan Watson.

Sportswoman of the Year: Kate Baxter.

Hurley Family Trophy (women's batting): Maree Heal.

Angela Buckland Trophy (women's bowling): Kate Baxter.

The Premier Cricket Awards for club performances went to New Plymouth Marist United players Dean Robinson (batting) and Ryan Watson (bowling).

Other awards were scooped by Maree Heal (women's player's player) and Philip Barraclough (men's player's player), and Jordan Gard (men's emerging player) and Caitlin Marshall (women's



Senior representative prize winners, from left. Back: Ryan Watson, Jordan Gard, Philip Barraclough. Front: Maree Heal, Kate Baxter, Caitlin Marshall.

most improved player).

In the absence of TCA Chairman John McElroy, Board Member Ian Snook made the presentations, and he paid tribute to all the winners for their achievements over the past season.

"It's a wonderful occasion to be able to look back and acknowledge these top performers who have done their team and province proud," he said. "There are exciting times ahead for Taranaki Cricket, with the calibre of players we have, I know we'll be continuing to grow our young athletes and I look forward to sharing their success and achievements in the years ahead."

A tribute was also expressed to the outgoing Travis Stewart and Kurt Leuthart and a welcome to new General Manager Ryan Evans.

"The work done by Travis over the past 15 years can't be understated, and he leaves an organisation in good heart and well positioned for the future," Snook said. "We wish Travis and Kurt all the very best for their next steps."

Photo: Helen Foreman

NEW SHED

An exciting development in Value Farm Sheds.



We've been building quality Farm Sheds for over 50 years. Now we have this exciting new option: Clearspan Sheds. **You can get an estimate + the plans simply by giving us a call!**

VALUE Building Supplies

BuildLink
Buy Better Build Better

1 KATERE RD, NEW PLYMOUTH
PH: 06 759 7435
EXT: 715

JAMES STREET INGLEWOOD
PH: 0800 245 535
www.valuebuilding.co.nz

Opunake Bowling Club



The 70th Jubilee Cake was cut by four Past Presidents of the Opunake Women's Bowling Club: (L to R) Kay Fleming, Val Coombe, Patty Symes, Nell L'Ami.

The Women's Club started in October 1951 at their own greens on King Street where the pensioner flats are now. There were 24 members and the annual sub was five shillings. They had six rinks and in 1980 they moved up to the Men's greens. In 1979-80 the Women's Club

bought the Western Bottling Company for \$6000 where the Club built the new kitchen and lino part of the building.

On March 30 1982 the new second green was opened. There were many working bees with women on their hands and knees hand

weeding the new green.

The Club had their first Classic in 1990. In 1997, the same day as the Cucumber Stakes Tournament a downpour flooded the pavilion and the Fire Brigade came and pumped the water out.

Kay Fleming

Lunch, Brunch or Dinner
The Good Home has you covered!
Book now!



21 Ariki Street, New Plymouth

www.thegoodhomenp.co.nz
bookings@thegoodhome.co.nz

06 758 4740

Sandfords Manaia Golf results

May 28. Saturday Men.

1. Carter Symes. 2. John Oliver. 3. Craig Jones. 4. Wayne Baker.

Juniors. Longest Drive. 1. Luke Norris. 2. Hannah Symes. Jack Gargan.

Putting. 1. Joshua McOnie. 2. Hannah Symes. 3. Luke Norris. 4. Jack Gargan.



UNIFIED AND AMPLIFIED FORCE - COASTAL RUGBY 2022



Max Pennington's
AutoCity
86 Molesworth Street, New Plymouth, Ph 06 769 5371
39 Regent Street, Hawera, Ph 06 278 2010 (0800 3 AUTOCITY)

Proud to sponsor
Coastal Rugby



Proud to be supporting
COASTAL RUGBY



BRUCE THOMPSON
FREEPHONE 0800 654 779
MOBILE 027 4455 258



06 759 9034



ACCOUNTING AND TAX

Call us on 06 281 1565 or 027 4542 284
62B Carthew St, Okato



0800 100 123

ravensdown

Smarter farming for
a better New Zealand



CALL TODAY
06 757 4483



027 558 9004



113 Gill Street - 06 759 4148



First round ends with loss to Tukapa

Our last game of the shortened first round was against the highly fancied Tukapa who many are picking as the favourite to take the title this year.

In trying conditions at Rahotu Domain with the wind blowing straight from the west it didn't matter which way you were playing..

We started off very well and were camped in the Tukapa half for most of the first 25 minutes but handling errors were crucial to keep it 0-0 for the first 30 minutes

Then we had another defensive error which allowed Tukapa to score a try against the run of play to lead 5-0 at the break.

After the break it was more of the same with Tukapa feasting on our mistakes in between a lot of good play.

Tukapa must be commended on their finishing abilities and their strong running, and when their super player Jacob Ratumaitavuki-Kneepkens read play beautifully showing his class and speed to latch onto a wide Coastal pass and dot down under the posts with a heart breaking intercept, the game was a big ask at 17-0 with 30 to go .

Rick McKenna came on as a replacement. He added a heap of energy on attack and defence and we opened our account with a beautiful show and go and a well weighted chip for Logan Crowley to score under the posts .17-7.

Then Tukapa scored with a defensive mistake, and it was 24-7.

Then we hit our straps speeding the game up with a lot of quick taps and sniping runs by Logan.

We scored again with 13 to



Blake Barrett stretches out to score as the FarmSource Prems get a first up competition win against Spotswood 43 - 24. (Tukapa game photos not supplied)

go to make it 24-12, the final score. We couldn't repeat the dose in the dying stages, but we gave it 100% to the 80th minute.

Player of the Day was Jeremy Gopperth. He really has stepped up to the grade and makes every post a winner.

Jackson Sinclair played really well at 10, directed play well and had things under control in trying conditions.

Chris Gawler wasn't far behind, turning in 80 powerful minutes and with his propping partner Mark Martin setting a strong base and some powerful runs and good skills by them.

Dylan Schuler was impressive again, as well as our whole pack getting stuck in and turning the ball over on a number of occasions.

It was a lot better effort

this week, and a bit more kilometres under our belts will help the boys.

Cam Stone and his team did a top job and we thank them for the effort they put in every week.

Daniel Doyle played his last game for us as he's taking up a new job in Otorohanga, and hopefully we will see him in the near future. He has been a great club member of all teams played for. He always plays 100% and will help out in whichever team required of him. He also is a great support of Hoon and Helmsy in the clubrooms.

It was a bad day to be a Kalin, George injured in the development game and Alex and Beni both injuring knees in our game ,the latter friendly fire by big bad Jeremy Gopperth on the wing and hopefully Willy

whips up a great batch of snapps and gets the boys full of running for next Saturday.

Lastly and sadly we would like to pass on our sympathies to the Fleming family at the sudden passing of Steve. He was a great supporter of the club and a great team player of the Opunake seniors at hooker for many seasons in his playing days.

Janet our tireless working chairperson and family, the whole club are gutted for you. You all have a lot of friends and respect in the club and we all want to help with whatever we can.

Beauden fronted on Saturday and played for the development. We thank him for helping out in this very tough time for their family .

RIP Steve Ride the Wave Mate.



Proud Sponsors of Coastal Rugby
158 Powderham Street, New Plymouth
Ph: 06 758 1199
Members of the Independent Insurance Brokers Assn.



YOUR BROADBAND SPECIALISTS
GO LOCAL - SWITCH NOW
0800 123 774 | www.primo.nz



UNIFIED AND AMPLIFIED FORCE - COASTAL RUGBY 2022



SETTLERS HONEY LIMITED

459 HEADS ROAD, CASTLECLIFF,
WHANGANUI
PH 06 929 5763



Supporting Taranaki farmers and proud to be in the scrum with Coastal Rugby!



Grant Gibson 027 528 8511
admnewzealand.co.nz

Peter Moffitt FarmWise®

Ph: 06 751 1265 - Mob: 027 242 1812

SANDFORDS RURAL CARRIERS

Proud to support Coastal Rugby

COASTAL AGRI SERVICES
Our Promise... "PEACE OF MIND"

97 TASMAN ST, OPUNAKE | PH 06 761 7079

CRAIGS INVESTMENT PARTNERS

1st Floor, 9 Young St, NP
newplymouth@craigsip.com **06 759 0015**

ECOLAB®

Proud sponsors of Coastal Rugby
CHRIS STANDING - 021 791 246

SINCLAIR ELECTRICAL & REFRIGERATION

sinclairelect@xtra.co.nz

Opunake 761 8084 Okato 752 4084
Kaponga 764 6084 Manaia 274 8084

BRIAN HILL BD HILL BUILDING

0274 442 703

Max Pennington's
AutoCity
86 Molesworth Street, New Plymouth, Ph 06 769 5371
39 Regent Street, Hawera, Ph 06 278 2010 (0800 3 AUTOCITY)

Proud to sponsor Coastal Rugby



Proud sponsors of the Coastal Division 1



For Spreading, Fertiliser, Lime and Log Cartage

SUPPORTING THE COAST FOR OVER 50 YEARS! Opunake 761 7341 - Okato 752 4124

QUALITY AGRICULTURE ON TIME

phone: 06 76 38765
www.goodinag.co.nz

Proud Sponsors of
- Coastal Division 2 Team
- The Coastal Rugby Club Farm



GoodinAg

Premiers back in winning form against Spotswood



Captain Jeremy Newell has Shamus Hurley-Langton for support as he grunts the ball upfield.

Photos Spinna Photography

A beautiful day dawned out the coast for our first proper competition game of the championship round vs Spotswood United at Rahotu.

The game was going to be a real pivotal match to whether we make a semi final spot this season as the competition looks really tight this season.

We started a bit tentative feeling each other out and making a few early handling mistakes and were punished by Spotswood scoring early to give us the wakeup call we needed.

We were winning nice clean ball and with Logan Crowley and Jackson Sinclair clearing the ball slickly we started to find holes in their defence.

After many phases we stuck

straight back and Matthew Picard crashed over next to the posts to make it 7-5.

Then we scored tries to powerful Shamus Hurley-Langton who had huge metres all day and probably our try of the day to Morne Pistorious, and then Rick McKenna latched onto an intercept to run 80 metres to make the halftime score 24-12 to us.

The second half was more of the same, frustrating little mistakes and a lot of good play in between, and we managed to score three more tries, two to our barnstorming captain, Jeremy Newell and one to Blake Barrett topping off a great game from the whole loose forward trio, making

the final score 43-24 and five points in the bag.

It was pleasing that our set piece and our lineouts are a lot better this season.

Our defence is still a work on in general. It is very good, but we just fall off the odd tackle we should make.

Sean Mare was the Player of the Day. What a huge performance of powerful running and defence. It's good to have a big guy who can get the boys some forward momentum and has a great tackling technique to stop anyone at a rate of knots.

The front row were very good again Chris Gawler is proving fatherhood is treating him well and with his partner Gemna and little

daughter Rosie watching him in the sun proved once again to be a dominant figure with ball in hand and leading the way.

All in all a fair effort, frustrating at times, but a good win nonetheless.

Once again injuries affected us big time and with our classy first five Jackson Sinclair breaking his jaw from a very questionable high shot having an op on Monday finishing his season, and Daniel Crowley and Rick McKenna also copping high shots, it will be a nervous week seeing who's available next Saturday.

All the best Jacko for a speedy recovery. You

Continued page 25

Simpsons Tyres and Service Centre



22 Leach Street - New Plymouth
Ph: 06 758 0780 29

PICKERING MOTORS

PH: 06 761 8363 - Tennyson St - Opunake
GO COASTAL!



UNIFIED AND AMPLIFIED FORCE - COASTAL RUGBY 2022



Max Pennington's
AutoCity
86 Molesworth Street, New Plymouth, Ph 06 769 5371
39 Regent Street, Hawera, Ph 06 278 2010 (0800 3 AUTOCITY)

**Proud to sponsor
Coastal Rugby**

Coastal Vets
Coastal
Veterinary Services
Ph 06 761 8105



Proud sponsors of Coastal Rugby

5 Tasman Street Opunake, Taranaki
PHONE 06 761 7531 - 0800 107006

Coastal Meat PROCESSORS
www.coastalmeats.co.nz

Phone: 06 752 4280
027 752 4280



**PROUD TO BE SUPPORTING
COASTAL RUGBY WOMEN**

John & Jacinta Hurley
NEW PLYMOUTH | INGLEWOOD
STRATFORD | HAWERA

CAMPBELL CONTRACTING LTD

Rusty: 027 280 0743



67 Breakwater Rd,
Motorua
Phone 06 751 5065

NEWTON GORDGE JOINERY



Contact Phill
027 236 7129



PIONEER
BRAND · PRODUCTS

South Taranaki Pioneer
Area Manager:
Kim Sharpe 027 528 0012

North Taranaki Pioneer
Area Manager:
Alan Bunning 027 206 0147



Tim Hurley 027 414 6756
Daniel Crowley 027 215 3609



**57 TUKAPA ST,
NEW PLYMOUTH**
06 753 7929
SUPPORTING
COASTAL RUGBY



Jared McBride
06 752 4558 or
027 4775 701
GO COASTAL!



Chaeden Ngaia attempts to evade a few Spotswood players as the Corkill Colts get up 17 - 7



Kayden Luke runs strongly but it wasn't quite enough to stop the FBT Div 1 going down to Spotswood 17 - 24.

Continued from page 24
always prepare yourself well
and the boys are gutted for
you as you were playing

great footy this season ,
and know how you'll hate
not playing, and of note he
played 30 minutes more not

wanting to believe he was
seriously injured and still
added plenty in that time.

On a positive note, it was
great to see Henie there on
Saturday. You're looking
great. Keep up the good
work .

The next two weeks are
going to be big as we have

NPOB at Vogeltown Park
and Tukapa at home. Neither
of those two games will be
easy.

As the competition has
proved, any team can beat
anyone if you're not on your
game.

Ride the wave.

CHALLENGE RahoTu
5800 South Rd, RahoTu
Ph 06 763 8848

COASTAL Printers
COPY · PRINT · DESIGN
Phone: 06 761 8037 Email: cavco@xtra.co.nz

BTW COMPANY
SURVEYING | ENGINEERING | PLANNING & ENVIRONMENT
179 Courtney Street, NP | 0800 BTW Survey (0800 289 787)

DeLaval

Coastal Agri
Your Performance Partner

COASTAL RUMBLE



12 ACTION PACKED FIGHTS



PRO DEBUT: TRICIA MACKENZIE

SPONSORED BY COASTAL AGRICULTURAL SERVICES



AYISHA ABIED

SATURDAY 2 JULY - OPUNAKE EVENT CENTRE

TICKETS AVAILABLE AT SINCLAIR ELECTRICAL & REFRIGERATION EVENTS CENTRE

GENERAL ADMISSION \$40 TICKET / CORPORATE TABLES \$1600

PH: ANGE - 027 307 7565 OR KELLY - 027 333 5199

Introducing some of the fighters

Tricia Mackenzie



Lance Thony



Bobby Katene



Toni Tuitupou



Lance Thony (26) has spent 22 years living on the Coast. Lance has just started up his own business as a contract sprayer. Boxing and this event was a suggestion, and he is now supported by one of Lance's best friends. Lance was keen to give boxing a go and is excited to be fighting on this card in the corporate section. Lance comments that he has been learning heaps and there is still plenty to learn. Making time to train has been working in well with work life as he is a single man. "I am finding that this is an enjoyable environment to be in, with lots of things happening at training. I wish all the boxers the best for their fights on the 2 July."

Sponsored by Thony Ag Ltd.
THONY AG LTD
Spraying Contractor
Ph Lance. 027 932 2086

Bobby Katene (16) from Opunake is a local boy that came to Barbwire Boxing and Fitness Gym 12 months ago. To get fitter for his rugby, after thorough training sessions he decided to carry on with the fight game and give amateur boxing a go. After winning his first three fights and losing his last fight in Auckland he is keen to get back on track with a win at Coastal Rumble against Dylan Bartman. Bobby is one of Taranaki's top heavyweight fighters. We wish Bobby all the best for his fight.
Sponsored by Barbwire Bach.



Toni Tuitupou (20) moved to Opunake when he was 11 years old. Attending Opunake High School, Toni enjoyed all sports, excelling in Rugby, making Ross Brown and several age grade Taranaki Rep Teams. Father Maloni took part in a corporate fight some years ago inspiring Toni to want to start boxing and give it a go himself. We wish Toni all the best for his fight.
Sponsored by Malcolm Campbell Livestock.



DeLaval

Coastal Agri
Your Performance Partner

MIRATION - ('Wonderful Surprise') The Village Gallery Monday 6th to Thursday 30th June

Ambury Hall, from Stratford, presents a solo exhibition of acrylic paintings, mixed media sculptures and brightly

coloured ephemeral installations intended to be temporary structures. A Preview and Opening will be held on Sunday June 5 at

2.30 pm when Zara Stanhope, Director of Govett Brewster Gallery/Len Lye Centre will officially open the Exhibition. This will be the first opening we have held for some time.

Artist Profile

"You are as old as you feel" – H.M. the Queen

Well, I feel 17 although I've been an 'emerging' artist for 75 years. A mere artistic caterpillar awaiting my butterfly moment.

Born in the UK, I was a Sixties child: beads, incense, London, Kings Road. Andy Warhol, Roy Lichtenstein, and David Hockney were deeply influential, Chelsea boots, Portabello Road (near where I flatted as a student), CND (Campaign for Nuclear Disarmament) marcher,



Australian Fire. Ambury Hall.



Time out. Ambury Hall.



Rainbow. Ambury Hall.

beach instilled in my my mind. How will beauty memory are recaptured in survive? Ambury Hall.

What's happening here?



anti-Vietnam activist. The list goes on, and so do the wonderful, wonderful memories when we literally changed the world!

Nowadays, as a hobby-artist, I content myself fiddling around, and like-minded artistic friends are a great comfort to me as I am widowed, live alone, and am quite happy with this. In Auckland for 30 years, I lived in Stratford 20 years ago, left, and then the mountain called me back.

All the images in this exhibition are painted in acrylic, mostly pastel colours on canvas, and wood-framed locally. All the installations are mixed media, brightly coloured and intended to be temporary structures.

I am very grateful to The Village Gallery community for facilitating this solo exhibition. Visits to the

National

PUBLIC MEETING - All welcome

Te Kiri Hall, Wednesday 15th June, 11am-2pm

Speakers: Harete Hipango - List MP
Barbara Kuriger - Agriculture
Andrew Bayly - Finance
\$ 10 each. Lunch Provided

AMBURY HALL
'MIRATION'
(*'Wonderful Surprise'*)
Mon 6 - Thurs 30 June

OPENING 6 June 2.30
Guest speaker:
Zara Stanhope
Director of Govett Brewster Gallery/
Len Lye Centre All welcome

THE VILLAGE GALLERY
166 HIGH STREET/ ELTHAM



TOURS & SHOWS

- Hawkes Bay Mid-Winter Getaway**
22-25 August 2022 \$1795.00 pp
Hawke's Bay is known as one of the sunniest places in New Zealand and winter is no exception.
 - World of Wearable Art**
1 October 2022 \$ 565.00 pp
Tickets Include: Luxury Coach, Premium Tickets & Accommodation
 - The Great Southern Rail Trail**
12 - 16 October 2022 \$3590.00
Experience all the scenic south has to offer in style travelling by train
 - Waiheke Garden Escape Limited Seats available**
3 - 7 November 2022 \$2458.00 pp
Beautiful Gardens, stunning art, food and wine, all enjoyed with the best company
 - Chatham Island Experience**
9 - 16 November 2022 \$4995.00 pp
The ever changing, spectacular and breath-taking scenery
 - The Winter Sunday Roast Challenge**
\$90.00pp email or phone for details
- Visit weirbros.co.nz for more tour information or to join our database.*
Pick up New Plymouth, Inglewood, Stratford & Hawera.
- 06 278 5858 www.weirbros.co.nz weirbros@extra.co.nz**

What does this get-up have to do with a funeral parlour? All will be revealed in Opunake Players "Stiff", by April Phillips, directed by Alexandra Lawn. Playing dates: June 23-26, June 30- July 3. Tickets are now on sale at Sinclairs, \$25 first two nights, \$30 the rest. "Stiff" is not for the uptight.

Opunake Players presents



STIFF

STIFF by April Phillips
Directed by Alexandra Lawn

Show dates 23 June - 26 June
& 30th June - 3rd July 2022



WEIR BROS

PH. 06 278 5858 HAWERA

Exhibition a biography of Tongaporutu's disappearing coastline

Images showing the staggering effects of climate change on the Tongapōrutu coastline captured by photographer Pat Greenfield feature in the 'Impermanence' exhibition now on at NPDC's Puke Ariki Museum. Tongapōrutu in North Taranaki has one of the fastest eroding coastlines in the world, where the erosion is measurable within our lifetime. The 76-year-old photographer, environmental activist and self-acclaimed archivist has taken the images over the past 20 years, considering it her "contribution to society in the fight against climate change". "We have one Earth and this can show one small part of what we are losing," says Pat.

Museum Manager Colleen Mullin says it is thrilled to showcase Pat's work. "I am sure it will resonate with visitors, not just because of her stunning work, but because it shows the impacts weather and other environmental factors is having on a much-loved part of Taranaki's coastline." The exhibition focuses on the popular Three Sisters Beach and neighbouring Four Brothers Beach. As part of her photographic journey Pat has also kept written records, informing her unpublished book 'At the Boundary of Impermanence', which she hopes to use to pass on her knowledge to others. The Impermanence exhibition is open until November 27.



Pat Greenfield.

Sunday Roast bookings only from 5:30pm till 7:30pm.

KAPONGA HOTEL
Cafe, bar, restaurant, bottle store, accommodation and conference room.
Quiz nights last Tuesday of every month.
DRY OFF VINYL PARTY JUNE 11, 7PM-LATE.
HAPPY HOUR, \$5 HANDLES AND MORE! 7PM-8.30PM

Open Tuesday to Sunday 11am to late
BOOKINGS ESSENTIAL
49 Egmont St, Kaponga
06 764 6770
Follow our Kaponga Hotel facebook page for daily promotions and updates.

South Taranaki Drive In Movie Nights

Grease Rawhitiroa Domain Friday 10 June, 5.30pm or 7.30pm
Herbie: Fully Loaded Ōpunakē Sunday 12 June, 5pm or 7pm

Drive In Movie Night

\$10 per vehicle per screening

Tickets on sale now!
Tickets are limited to 50 per screening, so get yours now from South Taranaki i-SITE Visitor Centre in Hāwera or from the Ōpunakē LibraryPlus.

Ōpunakē on Sunday 12 June (5pm or 7pm session).

Get the family together, bring along some snacks and drinks (or buy some there) and wrap up warm to watch movies in the comfort of your car.

South Taranaki District Council Events Co-ordinator Emma Vennell says she is excited to bring something new to the District.

"This is the first time we've tried something like this so come along and make a night of it," she says. "After COVID-19 disrupted our events calendar over the last couple of years, we are now looking at opportunities for families to be able to feel safe about coming to events again – and the Drive In Movie Nights fits the bill perfectly."

Tickets are \$10 per vehicle per screening and there is a limit to 50 cars per session, so get your tickets now from South Taranaki i-SITE Visitor Centre or the Ōpunakē and Eltham LibraryPlus.

Drive In Movie Nights at Rawhitiroa Domain contact Opunake Library Plus for Opunake location.

Take a trip down memory lane and come along to South Taranaki District Council's Drive In Movie Nights.

Come along to Grease at Rawhitiroa Domain in Eltham on Friday 10 June (5.30pm or 7.30pm session) or Herbie: Fully Loaded in

Hawera Repertory Society presents

MAMMA MIA!

MUSIC AND LYRICS BY
BENNY ANDERSSON
BJÖRN ULVAEUS

AND SOME SONGS WITH STIG ANDERSON
BOOK BY CATHERINE JOHNSON
ORIGINALLY CONCEIVED BY JUDY CRAYMER

Hawera Memorial Theatre
11-25 June 2022

Book at www.ITICKET.co.nz
Phone 0508 ITICKET (484 253)

ITICKET | SITE

LICENSED EXCLUSIVELY BY MUSIC THEATRE INTERNATIONAL (AUSTRALASIA)

LAWNMOWER SALES & SERVICE CENTRE
Ph 06 751 3021
571 Devon St West, BLAGDON, NP

SALES - SERVICE - REPAIRS

Rough weather ahead! Possible power cuts!
Be prepared - get your generators serviced now

GENERATOR & WATERPUMP SERVICING,
CHAINSAWS, RIDE ON MOWERS AND MORE
AGENTS FOR CUB CADET RIDE ONS
SERVICING ALL MACHINERY TARANAKI WIDE

BRIGGS & STRATTON | **solo** | Cub Cadet

NOW AGENTS FOR

GILTRAPAG ENGINEERED PERFORMANCE
DUNCAN

ALL GILTRAP & DUNCAN PRODUCTS NOW AVAILABLE

BALE FEEDERS IN STOCK
NORMALLY \$9850 + GST
NOW \$8500 + GST
(WHILE STOCKS LAST)

NEW PLYMOUTH 06 758 2274
HAWERA 06 278 5119

PAUL 027 498 7277 RAYMOND 027 444 8861

TransAgCentre AGRICULTURE

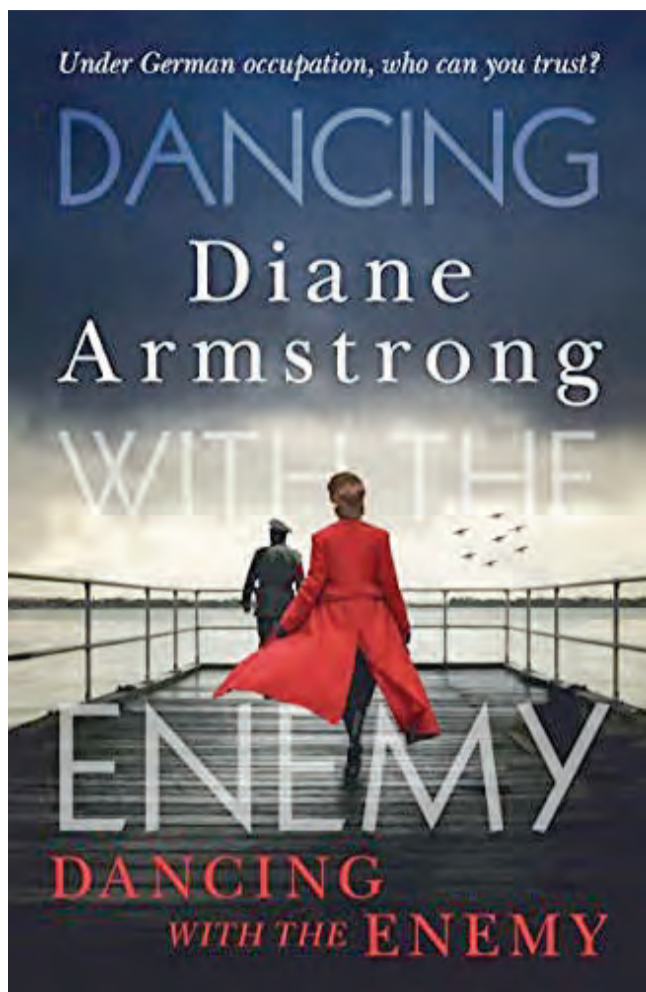
CASE II | **KUHN** | **KRONE** THE POWER OF GREEN

Opunake Library Plus book review

Dancing with the Enemy by Diane Armstrong

I am a fan of historical fiction based on real people in the past or actual events in history. This is often referred to as 'factual fiction' or 'invented prose narrative' if you'd like to sound really fancy. The fate of the Channel Islands (being The Bailiwick of Jersey and Bailiwick of Guernsey and the only part of Britain to be occupied by Nazi Germany) during World War II has fascinated me since the days of *The Guernsey Literary and Potato Peel Pie Society* and so the blurb of *Dancing with the Enemy* by Diane Armstrong made this a book I felt compelled to read and was very glad I did.

This is a book set both back in the 1940s and modern day 2019. When the Government demilitarises Jersey its occupants are left reeling with shock. How could Britain turn its back on them and leave them defenceless? Some leave immediately with or without family while some cannot or refuse to leave and those are the people we get to know. Dr Jackson,



You can reserve this book at any South Taranaki Library Plus branch.

who uses his role as a doctor to hide prisoners from the Germans. Milly who turned her head towards and the young German soldier who bought her ice-cream and the tragedy that followed. Tom Gaskell, young and angry, and whose decisions come at a cost he never imagined he and his friends would pay. His parents, a greedy cold mother who becomes a collaborator for money and food, and his father who does nothing to stop it. Their betrayal is astounding. The Jewish people on the island who find themselves on a list given freely to the Germans by administrators who obey the law, even German law. Friends turn on friends, family on family and yet those who can least afford it quietly continue to resist.

Fast forward to 2019 and young Australian doctor Xanthe Maxwell has just witnessed the suicide of a colleague and turns her back on the medical profession. She heads to the island for a rest and to try and recover her thoughts and rents Dr

Jackson's cottage. Finding his journal she begins, with Daniel who is writing his thesis on the Jewish people on the island during the war and slowly she begins to piece together what happened and how they fit into the story.

This is an excellent read which leaves you wondering what you might have done, what decisions you might have made if you were living

in those times. It's never as easy as you think.

You can reserve this book at any South Taranaki LibraryPlus branch in person, or call us on 0800 111 323.

You can also visit <https://ils.stdc.govt.nz/>

Maria Brewerton
Kaiārahi Whare Pukapuka
- Opunakē/Manaia Branch
Librarian -

CHURCH NOTICES

Opunake Co-operating Parish
Havelock Street, Opunake - St Pauls - 9.30am every Sunday
Rahotu - Wesley - 11am first Sunday of the month

Okato Co-operating Parish
Okato, St Paul's - Sunday Service every 1st and 3rd Sundays of each month, 10am
Okato, St Paul's - Prayer Meeting, first Thursday of each month, 7.30pm
Oakura, St James - Sunday Service every 2nd and 4th Sundays of each month, 10am
Oakura, St James - Prayer Meeting, first Wednesday of each month, 7.30pm

Opunake Catholic Church
St Martins, Pungarehu: 8.30am every 2nd and 4th Sundays of the month
Our Lady Star of the Sea, Opunake: 10am every Sunday
Other areas
Manaia - Sacred Heart - 1st, 3rd Sat at 5pm (2nd, 4th & 5th Sat at Hawera's St Josephs)
Kaponga - St Patricks, Sunday 8.45am
All welcome

St Patricks Catholic Church, Okato
Saturday Vigil 6.00pm - 1st, 3rd & 5th Saturdays

The Wave
Pentecostal Church 64 Domett St, Opunake
Sunday Services 10.30am
Women's Group 10am Tuesday
Men's Group 7pm Wednesday
Come along or contact
Belinda Philp
027 935 6191

St. Barnabas Anglican Church
141 Tasman St, Opunake
Sunday Services 10am
Communion 2nd, 3rd & 4th Sunday
Prayer & Praise 1st Sunday
Every 5th Sunday all 4 churches gather for a Combined Service

Okato Community Church
Meets 10.30am Sunday at Hempton Hall.
Everyone welcome

Pink Ribbon Breakfast extended to mid-June

more people in Taranaki urged to take part

Pink Ribbon Breakfast, Breast Cancer Foundation NZ's largest annual fundraising campaign which takes place every May, has been extended to 17 June, due to a lack of registrations. Chief executive Ah-Leen Rayner says that a third fewer Pink Ribbon Breakfasts have been hosted this year, representing a drop in income of roughly \$600,000.

The charity is desperate to make up the shortfall in order to ensure its services aren't impacted, and it's

urging more people in Taranaki to host their own Pink Ribbon Breakfast.


"In our third year of the pandemic, and with an under-resourced health system, breast cancer patients are really feeling the effects. Since Covid-19, the demand on our support services has increased significantly. Our specialist breast care nurses, who provide free tailored advice to thousands of women, are stretched to the limit, with four times as many calls coming in to our 0800 support line," says

Rayner. "We'll always be there for patients, but if we can't meet our fundraising target, it will limit the impact we can have. So please, sign up to host a Pink Ribbon Breakfast to help make a difference for women going through breast cancer."

Pink Ribbon Breakfast is where tens of thousands of Kiwis come together for good to raise vital funds for the Breast Cancer Foundation NZ. Pink Ribbon events can be hosted anywhere, at any time, and

registrations will close on 17 June.

Breast cancer is the most common cancer for New Zealand women, with around 80 in the Taranaki DHB area diagnosed with it annually. The money raised from every Pink Ribbon Breakfast goes towards ground-breaking research, awareness and education programmes, and patient support services.



72 Tasman Street, Opunakē - www.everybodystheatre.co.nz - Phone 027 383 7926
June 2022
Adults \$12, Students 4-16yrs and Senior Citizens \$10, Under 4 free

<p>SONIC THE HEDGEHOG 2 Action, Family 2hrs 2mins PG Sat 4th June 1pm</p> <p>PINOCCHIO: A True Story Animated, Family 1hr 44min PG Sat 11th June 1pm</p> <p>NOBODY HAS TO KNOW Drama 1hr 39mins M: Language Sat 4th June 7pm</p> <p>TOP GUN MAVERICK Action, Drama 2hrs 11mins TBA Mon 6th June 1pm</p> <p>THE BOB'S BURGERS MOVIE Animated, Comedy 1hr 42mins PG Fri 10th June 7pm</p>	<p>DOCTOR STRANGE Action, Fantasy 2hr 7mins M: Violence Fri 3rd June 7pm</p> <p>HOW TO PLEASE A WOMAN Drama 1hr 47mins M: Language Sun 5th June 1pm, Sun 5th June 7pm, Mon 6th June 7pm</p> <p>MOTHERING SUNDAY Romance, War 1hr 44mins M: Sex Sun 12th June 1pm, Sun 12th June 7pm</p> <p>JURASSIC WORLD: DOMINION Action, Adventure 2hrs 26mins M Sat 11th June 7pm, Friday 17th June 7pm</p>
--	---

We now have Boutique First Sunday of every month 1pm and 7pm

COASTALCARE

Haumarū ki Tai - Health and Community Centre

Our regular services

TAYLOR DENTAL PRACTICE
Every Thursday and Second Friday

LISA KEEN AUDIOLOGY
Every Wednesday

NEW PLYMOUTH PHYSIOTHERAPY
Every Tuesday and Friday

TARANAKI CHIROPRACTIC
Every Wednesday

COUNSELLORS
Gwenyth Richards 06 278 6399
Leonie Landsheer 027 559 0982
Alex Jones 021 0816 3248
Manuka Matthews 027 239 5896

BROWNING & MATTHEWS OPTOMETRISTS
Twice monthly on a Thursday

TARANAKI PODIATRY
Every 2nd Wednesday of the month

Mihis Place - Rongoa
Every 3rd Thursday of the month

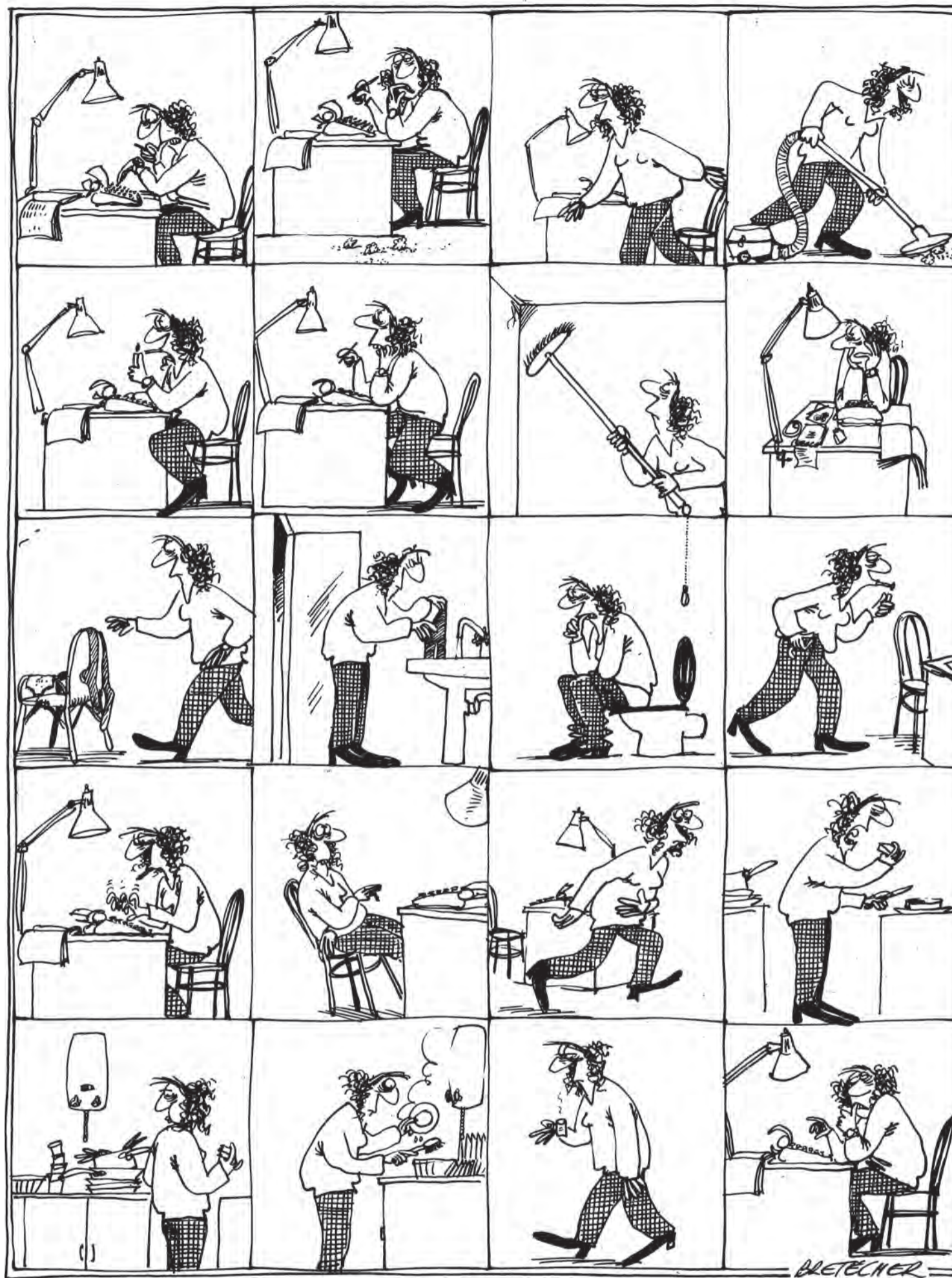


DID YOU KNOW?
CoastalCare offers for hire, quiet, private, well-appointed room's for meetings, training opportunities and social gatherings.

Permanently residing in the building are:
OPUNAKE PHARMACY
OPUNAKE MEDICAL CENTRE,
ST. JOHN AMBULANCE,
PLUNKET,
TARANAKI DHB SERVICES,
COASTAL PRINTERS

For a full list of services and happening here at CoastalCare find us on Facebook or visit us at www.coastalcare.co.nz
Contact Aretha Lemon Facility Manager on 06 761 8488

CREATION



What's On Listings

- ONGOING**
Movies at Everybodys Theatre in Opunake: Playing several days and nights each week. Refer timetable in newspaper.
MONDAYS: Tainui Day Centre - St Barnabas Church Hall, 141 Tasman Street Opunake: Each Monday 10 am - 12:230 pm. Information call Jenny 7618080 or Glenys 6558025
TUESDAYS
Opunake Walking Group: Every Tuesday 10am. Meet outside Club Hotel on Havelock St. Phone Margaret 027 477 5600 for more info if needed, or just turn up.
Life Drawing Group: Weekly at the Emporium, 86 Tasman St, Opunake 7pm to 9pm. \$10 to pay for the model. If anyone is interested please call Marianne Muggeridge on 06 274 5713.
WEDNESDAYS
Lisa Keen Audiology at Coastal Care, Opunake: Wednesdays 9am - 5pm, for an appointment call 027 591 4222 - 0800 555 676
Okato & District Historical Society open every Wednesday: At the Okato Community Trust Hall, 47 Cumming St, Okato. phone Meg on 06 752 4566.
Opunake Embroiders Guild: Meet 2nd and 4th Wednesdays of the month, 10.30am-3pm at the Opunake Business Centre, Napier St, Opunake. Just come along or phone Sheryl 06 761 8769.
Okato Market: In Hempton Hall, Okato 4.30 to 6.30pm.
Free singing experience with Taranaki Harmony Chorus: Meet every Wednesday at Inglewood Mamaku Centre, 7-9.30 pm Phone Helen 021 296 0700.
THURSDAYS
Coastal Young Farmers: Meet 2nd Thursday of every month at 7pm at Butlers Reef Bar & Cafe, Oakura.
Taranaki Country Music Hall of Fame, Manaia: Running every Thursday night from 7.30pm, 11 Surf Highway, South Road, Manaia.
FRIDAYS
Eltham Business Association Friday Markets: 9:30am to 1pm, Carpark of Touch Point, High Street, Eltham.
Singer Songwriters, New Plymouth: Last Friday of the month at Little Theatre, 29 Aubrey St, NP from 7-11pm.
WEEKENDS
The Historic Cape Light & Museum: Open 11am - 3pm weekends, Bayly Road, Warea.
MAY 10 TO JUNE 3
Members Autumn exhibition: At the Village Gallery, Eltham.
MAY 26 - JULY 4
'Call and Response' exhibition: At from out of the blue gallery, Opunake.
JUNE 5
Philip Richardson Bishop of Taranaki & Waikato: At St Barnabas, Opunake, 10am.
JUNE 6 TO 30
Ambury Hall 'Miration' exhibition: At the Village gallery, Eltham.
JUNE 10 AND JUNE 12
South Taranaki Drive in movie nights: At Rawhitiora Domain, Eltham and in Opunake.
JUNE 11 TO 25
Mamma Mia: A production by Hawera Rep. At Hawera Memorial Theatre.
JUNE 12
Pungarehu Community Society AGM: Pungarehu Hall, 11.30am
JUNE 15
NZ National Party public meeting: Te Kiri Hall, 11am-2pm.
JUNE 23-26, JUNE 30-JULY 3
Opunake Players present 'Stiff'
JULY 2
Coastal Rumble: Twelve action packed boxing fights. At Sinclair Electrical & refrigeration Event Centre, Opunake.
JULY 4
Opunake & Districts Business Association AGM: At the Opunake Business Centre, 5.30pm.

90 Tasman St, Opunake - Ph: 06 761 8550

Arty Tarts

Genuine Home Cooked Food, Pies, Savouries, Fresh Scones, Muffins, Cakes, Slices and Sandwiches.
 All Day Breakfast
 Open 6am - 4pm
 Open 7 Days a week



LIVING AWAY FROM OPUNAKE BUT WANT TO KEEP UP WITH WHAT'S GOING ON?

Subscribe to the Opunake & Coastal News and we'll post you a paper as soon as it's out!

06 761 7016

OPUNAKE & COASTAL NEWS

TRADES & SERVICES



Contact Phill - 027 236 7129

COASTAL STOPPERS. Phone Glenn 027 524 5745
 GIB building houses. Ph 027 236 7129.
 HCL BUILDERS for building houses. Ph 027 236 7129.

PUBLIC NOTICES



Egmont A&P Association

In the community for the community by the community

EGMONT AGRICULTURAL & PASTORAL ASSOCIATION (INC)

ANNUAL GENERAL MEETING

NOTICE is hereby given that the 138th Annual General Meeting of the Egmont Agricultural & Pastoral Association (Inc) will be held at the Hawera Club, 38 High St Hawera, on Monday 20th June 2022, commencing 7.00pm.

A light supper will be provided, a cash bar will be open.

NOMINATIONS are called for the Office of President and Executive Committee Members. These shall be in the hands of the Secretary by Monday 13th June, 7 days before the Annual General Meeting and shall have consent of the nominee endorsed thereon (Rule13).

Nomination forms are available on application to the Secretary at the Showground Office:

Phone 021 517 033 or email info@egmontshowgrounds.org.nz

Nominations close with the Secretary at 12.00 pm Monday 13th June 2022.

Candace Smith
SECRETARY

TENDER - WAREA DOMAIN

The Warea Recreational Reserve board offers by tender the lease of 6.0702 hectares of grazing land situated on Surf Highway 45 at Warea.

Term of Lease:

3 years from 1st July 2022 to 30th June 2025

Copies of the lease available from:

Warea Domain Board Secretary

Marty Brophy, Phone: 06 752 1158

email: hawkesbury@xtra.co.nz

Tenders close Friday June 10th at 5pm



AGM

Monday July 4, 2022
at 5.30pm

All welcome

Opunake Business Centre, 23 Napier St, Opunake
(opposite the Coastal Care Medical Centre)

PHILIP RICHARDSON BISHOP OF TARANAKI & WAIKATO

Archbishop of the New Zealand Dioceses at Anglican Church of Aotearoa, New Zealand and Polynesia New Zealand

WILL BE AT ST BARNABAS, OPUNAKE FOR PENTECOST SUNDAY, 5TH JUNE 10.00AM

Curious? Come along.
Interested? You will be very welcome.

You will even get a cup of tea or coffee afterwards!

P.D. FLEMING LOGGING LTD

Forestry rigged & certified 33 ton loader, National Certificates in Forest Operations, Health & Safety approved. Free assessment on what your trees are worth \$\$\$

Ph: Paul

027 630 9922 or email: paulflems@gmail.com

CARPETS second hand, large selection After Disaster Ltd 223 Devon St West, NP. Phone (06) 769 9265

McNEIL DECORATING – for all your painting and decorating. Ph: Jason McNeil 027 233 4584.

HCL BUILDERS for alterations. Ph 027 236 7129.

LAWNMOWING, and section maintenance by local contractor SOS. Free quote. Ph 027 605 8437.

SITUATIONS VACANT



POSITION AVAILABLE

We're looking for a cleaning fairy, someone who likes to make sparkly clean spaces.

The role is suitable for someone who is passionate about cleaning, and likes to get stuck in. Commercial cleaning experience is preferable, but not required.

Skill requirements for this role are:

- Previous industrial cleaning experience working in food manufacturing / kitchen environment preferred.
- We are committed to Health and Safety at Yarrows that includes Pre-Employment and Random Drug and Alcohol Testing.
- Must be able to provide a vaccination passport.
- Punctual, reliable and trustworthy.
- A reasonable level of fitness as some duties are considered heavy duty.
- Able to manage time effectively.

If you're interested in the role - please come into the Admin office at 38 South Rd, Manaia and ask for a job application form or email russell@yarrows.co.nz for an application form.

PUBLIC NOTICES

Opunake Bowling Club Annual General Meeting

Sunday 12 June 2022 at 1pm at the Bowling Club
Current and intending members welcome

P. Deegan
President

Kaponga Fishing Club AGM

To be held at Larry Vickers' place
6 Manu Street, Okaiawa
Thursday June 23, 5.30pm.

F. Lawn
President

Pungarehu Community Society Incorporated AGM

Election of committee
June 12, 11.30am
Pungarehu Hall, SH45
All welcome

BUDGET ADVICE available by appointment, home visits or at Coastal Care office. Phone 0800 333 048.

FOR SALE

VIRULENT VIRUSES have threatened human health from ancient to modern times. Medicinal plants used in previous epidemics such as Echinacea, Olive leaf, Angelica, Thyme, will help support your immune system. At the health shop Centre City, 06758773

DO YOU HAVE trouble swallowing pills? We now have yummy Gummies, multis, apple cider vinegar, ashwagandha for stress and magnesium etc. Come on in for a free sample. At the Health Shop, Centre City. 06 758 7553.

ARE YOU getting enough sunshine?!!! If you are feeling down, achy, no energy - you may need Vitamin D. Call into the Health Shop Centre City for more info. 06 758 7553.

SITUATIONS VACANT

Mountain to Surf Principal Association

Attendance and Engagement Advisor/Kaiāwhina (fixed term contract, end date 18th December 2022)

We are looking for an Attendance and Engagement Advisor/Kaiāwhina to work with children and young people, their families and whānau, and schools from Opunake through to Matapu.

This role is part of the Ministry of Education's initiative to improve engagement with learning and attendance at school. A key part of the role will be working closely with the community to build an understanding of the importance of attendance.

The Attendance and Engagement Advisor will work with students, family and whānau and take a holistic approach to address the underlying cause of non-attendance, which are often diverse and complex.

Key attributes:

- Ability to work in a culturally responsive way, to support and meet the needs of all families with a particular focus on the needs of Māori and Pacific learners
- Enjoy working with children and young people, aged 6 to 16, and their whānau
- Ability to quickly foster trust in the system and an understanding of the importance of early referral
- Demonstrate initiatives to create flexible solutions within guidelines
- Able to work independently but work with key stakeholders on our committee, to keep schools informed and involved
- Quickly establish working relationships with inter-agency staff
- Strong administration and record keeping skills, ability to quickly learn new systems
- Persistent, efficient and values seeing tasks through to completion.
- Relentlessly positive

Skills and experience:

- The role will suit someone who has skills or experience as a social worker, Māori Warden, truancy officer, community worker, or similar.
- Must have a full driver's licence, and you will be required access to your own vehicle. This will be reimbursed at 58c per kilometre.

Hours of work:

9am to 3pm, Monday to Friday, term time only. We are happy for this to be a job share position.

Applications must be submitted with a CV, covering letter and an application form. The application form and job description are available from Opunake Primary School or online on the Opunake Primary School website. Applications Close on the 10th June 2022 at 3pm. Contact Lorraine Williamson at Opunake Primary if you require a hard copy of the application, office@opunakeprimary.school.nz or (06) 7618367.

TO LET



Office Rooms/ Board Room available

Long term, short term or casual basis
Building has kitchen facilities, wheelchair access, cleaning services and plenty of parking on Napier Street or at rear of building on King Street.
Inquiries to Clare Moss - Ph 06 278 4169
clare.moss@hughson.co.nz

WANTED TO BUY

SCRAP METAL - for all scrap metal Taranaki wide, give us a call. Molten Metals (06) 751 5367.
www.moltenmetals.co.nz



MOVING?

Subscribe to the Opunake & Coastal News and we'll post you a paper as soon as it's out!

06 761 7016



Ph 06 761 7016 to be in our next issue.

meritcars

with distinction

VISIT WEBSITE MERITCARS.CO.NZ

493 DEVON STREET EAST, STRANDON, NEW PLYMOUTH
CALL US TODAY 06 281 1925

ALL ON ROAD COSTS INCLUDED PLUS TANK OF FUEL. ONE STOP SHOP FOR FINANCE, WARRANTIES & FREE SMILES

2014-2017 NISSAN X-TRAIL ST 7 SEATER NZ NEW

2.5, Tiptronic Auto, Daytime Running Lights, Auto Lights, Driving Lights, Cruise Control, Multi Airbags, Air Con, Stereo with USB, Smart Key With Push Button Start, ABS Brakes, Stability Control, Reverse Camera, Electric Windows, Electric Mirrors, Rear Spoiler. LOW KM

3 FROM **ONLY \$21995**



08 Xtrail \$10995

2010 HYUNDAI i45 2.0 A6 NZ NEW

DOHC 16V Engine, Tiptronic Automatic, Stability Control, ABS Brakes, Multi Airbags inc Side Curtain, Electric Windows, Remote Central Locking, Stereo with USB & Aux, Cruise Control, Reverse Camera, Air Con, Alloy Wheels.

ONLY \$10,995



2010 NISSAN MURANO 250XV

VERY SMART & POPULAR HIGRADE SUV
Auto, CD Player/Reversing Camera/Side Camera, Bluetooth Phone, Climate Control Air Con, Leather Trim, Cruise Control, ABS Brakes, Air Bags, Electronic Stability Control, Driving Lights, Keyless Entry & Operation, Tinted Windows, Auto Lights, Dual Sunroof, Alloy Wheels, 80km

\$16,995



2010 MAZDA 3 SP25 AUTO NZ NEW

POPULAR NZ NEW SPORTSHATCH
NZ NEW, Tiptronic Auto, ABS Brakes, Multi Airbags inc Side, Driving Lights, Electronic Stability Control, Cruise Control, Dual Climate Control Air Con, Electric Windows, Alloys.

ONLY \$10,995



07-09 AXELA SPORTS 2.0, TWO FROM \$8995

2008 HONDA ELYSION VG 8 SEATER

Beautiful Hi Spec Example. Auto, QuadCam, 24 Valve, Vtec, V6, Alloy Wheels, 8 Seater. Bodykit, Headphone Sets for Rear Passengers. 74km

NOW ONLY \$11,995



WE ARE YOUR ONE STOP SHOP FOR QUALITY VEHICLES FINANCE AND INSURANCE FROM ZERO DEPOSIT AND ALL ON ROAD COSTS INCLUDED IN PRICE THIS WEEKS SPECIAL

2018 HOLDEN CAPTIVA LS EQUIPE 2.4P 7 SEATER: NEW 7 SEATER SUV

NZ NEW, Tiptronic Automatic, Stability Control, Multi Airbags, ABS Brakes, Cruise Control, Stereo With B/Tooth USB & AUX, Electric Sunroof, Keyless Entry & Start, Front & Rear Aircon, Daytime Running Lights, Driving Lights, Auto Lights, Alloys, Leather Trim, Electric Drivers Seat Adjust, Electric Windows, 7 Seater, Reverse Camera & rear Parking Sonar. 62KM



ONLY \$25,995

2012 SUBARU IMPREZA SPORTS 1.6

Very Popular SPORTY HATCH Low Kms
Automatic, ABS Brakes, Air Conditioning, Dual Airbags, Driving Lights, Reversing Camera, Four Wheel Disc Brakes, Power Windows & Mirrors, Electronic Stability Control, Keyless Entry with Push Button Start, Tinted Windows, Alloy Wheels. 75km



\$12,995

2006 HONDA ODYSSEY ABSOLUTE

2.4 Automatic, Climate Aircon, Cruise Control, ABS Brakes, Dual Airbags, Partial Leather Trim, Driving Lights, Tinted Windows, Alloy Wheels 131km.

ONLY \$5,995



2009 MAZDA ATENZA SPORTSHATCH 25S

Tiptronic Auto, Stability Control, ABS Brakes, Multiple Airbags, Dual Climate AirCon, Cruise Control, Keyless Operation With Remote Central Locking, Auto lights, Auto Wipers, Alloy Wheels, Rear Spoiler, Tinted Windows, Stereo inc BOSE BASE AMPLIFIER., 69KMS;

ONLY \$13995



2005 & 2004 TOYOTA ESTIMA G EDITION 8 SEATERS:

2.4 Automatic, 8 Seater, Power Windows, Remote Central Locking, Air Bags, ABS Brakes, Climate Control Air Con, Electric Opening Side Doors, ABS Brakes, Driving Lights, Alloy Wheels, Cruise Control. Low Kms. 2 to choose

FROM \$7995



1 SOLD

2011 SUBARU EXIGA 7 SEATER

2.0 Tiptronic Auto, Remote Central Locking, Driving Lights, Electronic Stability Control, Rear Spoiler, Tinted Windows.

40KM ONLY \$10,995



2016 NISSAN NOTE X Low KMS

CLEAN CAR REBATE OF \$954.90 APPLIES ASK FOR DETAILS. Auto, Power Steering, Power Windows & Mirrors, Central Locking/Remote Locking With Keyless Operation, Air Conditioning, ABS Brakes, Air Bags, Electronic Stability Control, Lane Departure and Collision Warning System. 60km

ONLY \$12,995



2010 SUZUKI SX4 GLX SPORT

LOW KMS NZ NEW

Automatic, Power Steering, Power Windows & Mirrors, Remote Central Locking, ABS Brakes, Air Bags, Alloy Wheels, 86km

ONLY \$11,995



VEHICLES ARRIVING DAILY - SEE ONSITE SPECIALS FROM \$1500
VISIT MERITCARS.CO.NZ

GRAB A BARGAIN



LOCALLY OWNED & OPERATED

Ph 06 281 1925 • Chris Elliot 027 471 5972

Ph 06 757 3585 • Paul Butler 027 449 5382